



Duct Connected -Low/Middle Static Pressure- FDUM

Model No.

| | |
|-------------|--------------|
| FDUM22KXE6F | FDUM71KXE6F |
| FDUM28KXE6F | FDUM90KXE6F |
| FDUM36KXE6F | FDUM112KXE6F |
| FDUM45KXE6F | FDUM140KXE6F |
| FDUM56KXE6F | FDUM160KXE6F |



Filter kit (option)

UM-FL1EF : for 22~56
UM-FL2EF : for 71, 90
UM-FL3EF : for 112, 140, 160



*Filter pressure loss:5pa

Remote control (option)

Wired



RC-EX3A RC-E5 RCH-E3

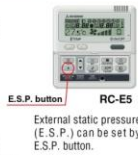
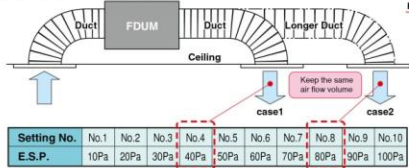
Wireless



RCN-KIT4-E2

Automatic external static pressure (E.S.P.) control

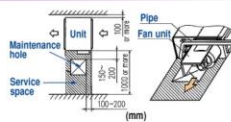
Duct design was simplified.
Using DC motor, the most optimum air flow volume can be achieved by this automatic control.
Indoor unit will recognize external static pressure by itself automatically and keep rated air flow volume.



E.S.P. button RC-E5
External static pressure (E.S.P.) can be set by E.S.P. button.

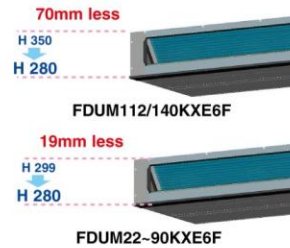
Improvement of the serviceability

Fan unit (impeller and motor) can be pulled out from the right side or the bottom side of the unit.
Maintenance can be available from the right side or the bottom side.



Thin design

The height of all FDUM models is only 280mm.



Transparent inspection window

Dirt condition of the bottom of a drain pan can be checked through this transparent inspection window without removing drain pan. (Please refer to P74)

Specifications

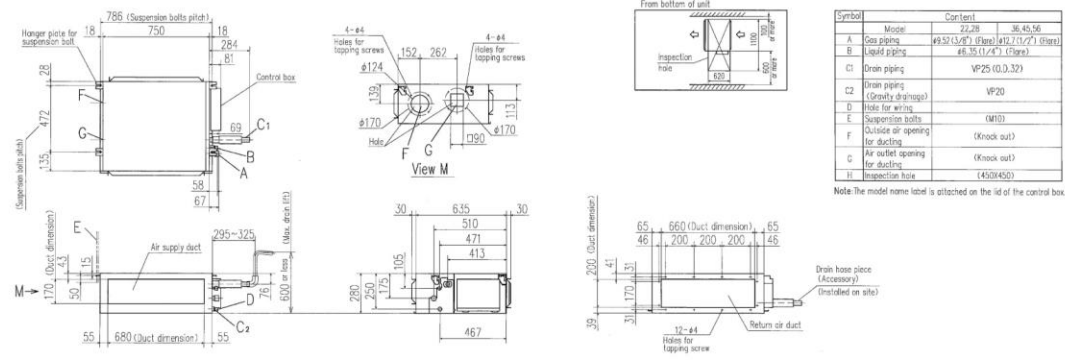
| Item | Model | FDUM22KXE6F | FDUM28KXE6F | FDUM36KXE6F | FDUM45KXE6F | FDUM56KXE6F | FDUM71KXE6F | FDUM90KXE6F | FDUM112KXE6F | FDUM140KXE6F | FDUM160KXE6F | |
|--|---------------------|---|-------------|-------------|---|-------------|---------------------------|--|--------------|---|--------------|-----------|
| Nominal cooling capacity | kW | 2.2 | 2.8 | 3.6 | 4.5 | 5.6 | 7.1 | 9.0 | 11.2 | 14.0 | 16.0 | |
| Nominal heating capacity | kW | 2.5 | 3.2 | 4.0 | 5.0 | 6.3 | 8.0 | 10.0 | 12.5 | 16.0 | 18.0 | |
| Power source | | 1 Phase 220-240V, 50Hz | | | | | | | | | | |
| Power consumption | Cooling | 0.10-0.10 | | | | | 0.20-0.20 | | | 0.29-0.29 | 0.33-0.33 | 0.45-0.45 |
| | Heating | 0.10-0.10 | | | | | 0.20-0.20 | | | 0.29-0.29 | 0.33-0.33 | 0.45-0.45 |
| Sound power level | dB(A) | 60 | | | | | 65 | | | — | | |
| Sound pressure level | dB(A) | P-Hi:37 Hi:32 Me:29 Lo:26 | | | | | P-Hi:38 Hi:33 Me:29 Lo:25 | | | P-Hi:44 Hi:38 Me:36 Lo:30 P-Hi:45 Hi:40 Me:34 Lo:29 P-Hi:47 Hi:40 Me:35 Lo:30 | | |
| Exterior dimensions H x W x D | mm | 280 x 750 x 635 | | | | | 280 x 950 x 635 | | | 280 x 1370 x 740 | | |
| Net weight | kg | 29 | | | | | 34 | | | 54 | | |
| Air flow | m ³ /min | P-Hi:13 Hi:10 Me:9 Lo:8 | | | | | P-Hi:24 Hi:19 Me:15 Lo:10 | | | P-Hi:36 Hi:28 Me:25 Lo:19 P-Hi:39 Hi:32 Me:26 Lo:20 P-Hi:48 Hi:35 Me:28 Lo:22 | | |
| Maximum external static pressure | Pa | 100 | | | | | | | | | | |
| Outside air intake | | Possible | | | | | | | | | | |
| Air filter | | Filter kit:UM-FL1EF/UM-FL2EF/UM-FL3EF(option) | | | | | | | | | | |
| Remote control(option) | | wired:RC-EX3A, RC-E5, RCH-E3 wireless:RCN-KIT4-E2 | | | | | | | | | | |
| Installation data Refrigerant piping size | mm(in) | Liquid line:ø6.35(1/4") Gas line:ø9.52(3/8") | | | Liquid line:ø6.35(1/4") Gas line:ø12.7(1/2") | | | Liquid line:ø9.52(3/8") Gas line:ø15.88(5/8") | | | | |

1. The data are measured under the following conditions (ISO-T1). Cooling: Indoor temp. of 27°CDB, 19°CWB, and outdoor temp. of 35°CDB. Heating: Indoor temp. of 20°CDB, and outdoor temp. of 7°CDB, 6°CWB. External static pressure of indoor unit is 35Pa(22/28/36/45/56/71/90, 60Pa(112/140/160).
2. Sound pressure level indicates the value in an anechoic chamber. During operation these values are somewhat higher due to ambient conditions.

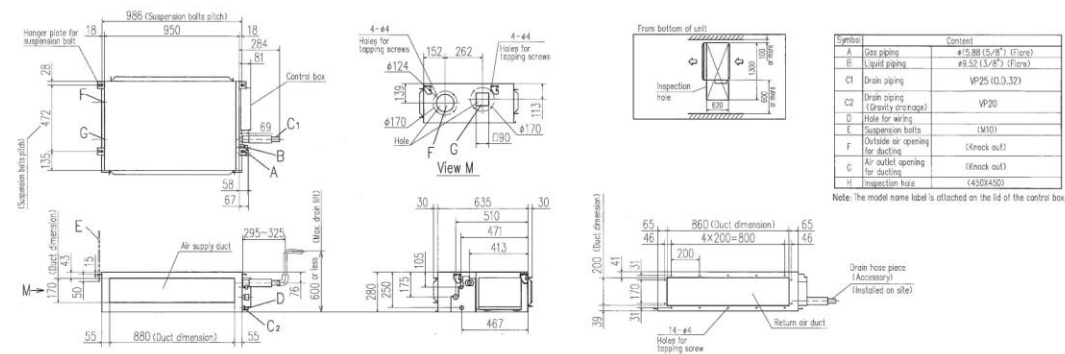
Dimensions

All measurements in mm.

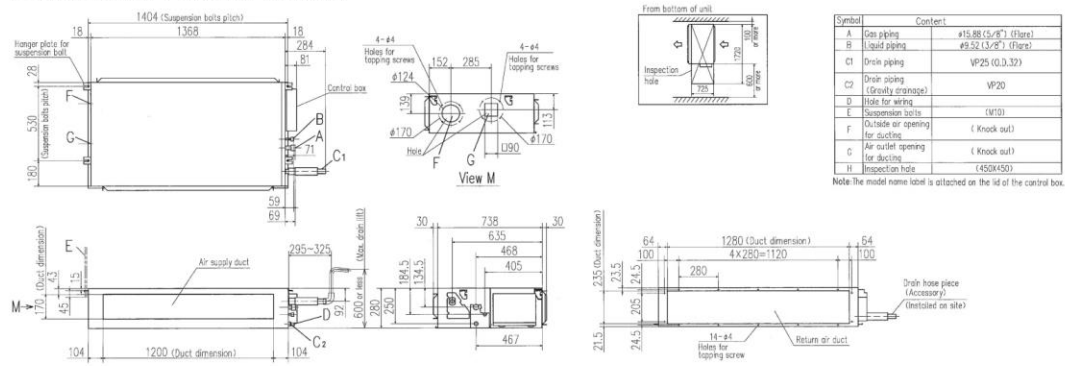
FDUM22KXE6F, 28KXE6F, 36KXE6F, 45KXE6F, 56KXE6F



FDUM71KXE6F, 90KXE6F



FDUM112KXE6F, 140KXE6F, 160KXE6F



Round duct adapter

In case of requirements of round duct adapter, please refer to P83.

Company URL | AIRZONE <http://www.airzone.es>