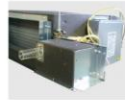




Duct Connected (Compact & Flexible) FDUH

Model No.
FDUH22KXE6F
FDUH28KXE6F
FDUH36KXE6F



Drain up kit (option)
(600mm)
UH-DU-E

Filter kit (option)
UH-FL1E



*Filter pressure loss:5pa

Remote control (option)

Wired



RC-EX3A RC-E5 RCH-E3

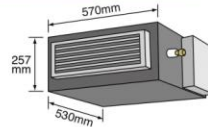
Wireless



RCN-KIT4-E2

Compact and thin size, light weight

Our leading high technology has realized the best solution for air conditioning in hotels with compact and thin size units and high energy efficiency. In addition, weight is only 20kg.

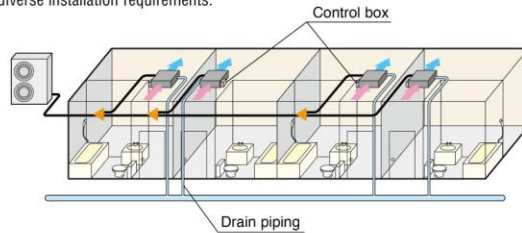


Quiet operation

The lowest sound level in the industry can ensure comfortable stay and rest in hotels.

Installation Flexibility

Control box and drain piping can be installed on both side of the unit and air intake to the unit is available from bottom or back side. Our highest technology can satisfy diverse installation requirements.



Wired remote control



RCH-E3 (option)

Simple remote control

Considering specialized usage in hotel rooms, control buttons are limited only to minimum required functions such as ON/OFF, mode, temperature setting and fan speed. It is really simple and easy to use.

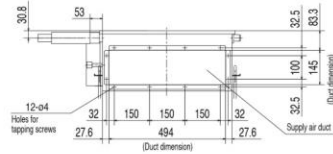
Specifications

Item	Model	FDUH22KXE6F	FDUH28KXE6F	FDUH36KXE6F
Nominal cooling capacity	kW	2.2	2.8	3.6
Nominal heating capacity	kW	2.5	3.2	4.0
Power source		1 Phase 220-240V, 50Hz		
Power consumption	Cooling	0.05-0.07		
	Heating	0.05-0.07		
Sound power level	dB(A)	60		
Sound pressure level	dB(A)	P-Hi: 39 Hi: 33 Me: 30 Lo: 27		
Exterior dimensions HxWxD	mm	257x570x530		
Net weight	kg	22		
Air flow	m ³ /min	P-Hi: 8.5 Hi: 7 Me: 6.5 Lo: 6		
External static pressure	Pa	30		
Outside air intake		Possible from return duct		
Air filter		Filter kit:UH-FL1E(option)		
Remote control(option)		wired:RC-EX3A, RC-E5, RCH-E3 wireless:RCN-KIT4-E2		
Installation data	Refrigerant piping size	Liquid line:ø6.35(1/4")		Liquid line:ø6.35(1/4")
		Gas line:ø9.52(3/8")		Gas line:ø12.7(1/2")

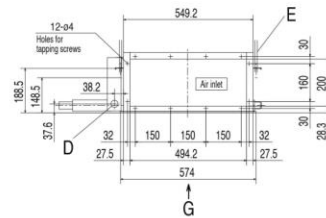
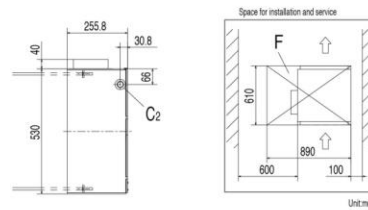
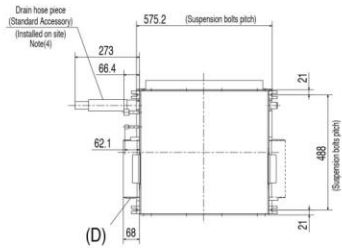
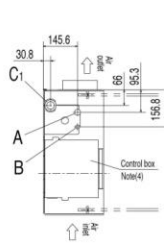
1. The data are measured under the following conditions(ISO-T1). Cooling: Indoor temp. of 27°CDB, 19°CWB, and outdoor temp. of 35°CDB. Heating: Indoor temp. of 20°CDB, and outdoor temp. of 7°CDB, 6°CWB.
2. Sound pressure level indicates the value in an anechoic chamber. During operation these values are somewhat higher due to ambient conditions.

Dimensions

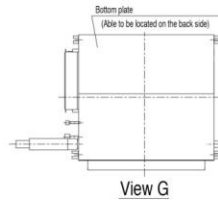
All measurements in mm.



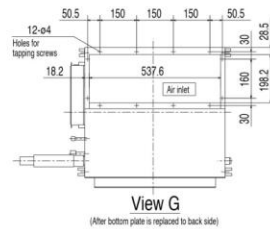
Symbol	Content		
	Model	FOUR22K0E6F 28K0E6F	FOUR36K0E6F
A	Gas piping	ø9.52 (3/8") (Flare)	ø12.7 (1/2") (Flare)
B	Liquid piping	ø6.35 (1/4") (Flare)	
C1, C2	Drain piping	VP20 (D.20, O.D.26) Note (2)	
D	Hole for wiring	ø30	
E	Suspension bolts	(M10)	
F	Inspection hole	(Ø55X85) Note (3)	



- Notes
- (1) The model name label is attached on the fan case inside the air return grille.
 - (2) Prepare the connecting socket (VP20) on site. (As for drain piping, it is possible to choose C1 or C2.)
 - (3) When control box is located on the reverse side, installation space should be modified to new location.
 - (4) Control box and Drain hose piece are able to be relocated on the reverse side.



In case of Bottom air intake



Simple remote control

