



# Duct Connected (thin) -Low Static Pressure- FDUT

**Model No.**  
 FDUT15KXE6F-E  
 FDUT22KXE6F-E  
 FDUT28KXE6F-E  
 FDUT36KXE6F-E  
 FDUT45KXE6F-E  
 FDUT56KXE6F-E  
 FDUT71KXE6F-E



## Remote control (option)

Wired



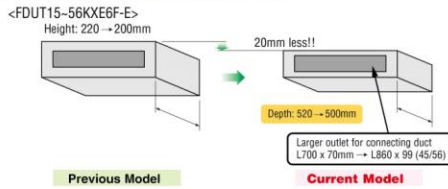
RC-EX3A RC-E5 RCH-E3

Wireless

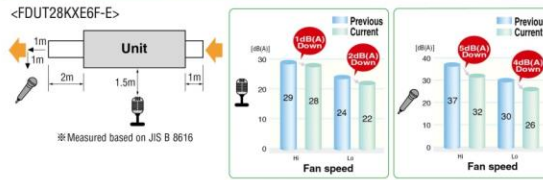


RCN-KIT4-E2

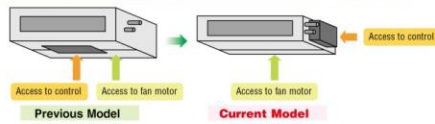
### Compact design



### Lower noise



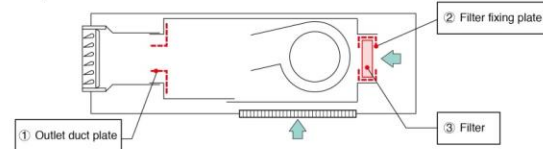
### Serviceability



### Duct kit and filter options

Item	Contents	for FDUT15/22/28/36KXE6F-E	for FDUT45/56KXE6F-E	for FDUT71KXE6F-E
Outlet duct plate	①	UT-SAT1EF	UT-SAT2EF	UT-SAT3EF
Filter set	②+③	UT-FL1EF	UT-FL2EF	UT-FL3EF

Filter pressure loss : 5 Pa



## Specifications

Item	Model	FDUT15KXE6F-E	FDUT22KXE6F-E	FDUT28KXE6F-E	FDUT36KXE6F-E	FDUT45KXE6F-E	FDUT56KXE6F-E	FDUT71KXE6F-E	
Nominal cooling capacity	kW	1.5	2.2	2.8	3.6	4.5	5.6	7.1	
Nominal heating capacity	kW	1.7	2.5	3.2	4.0	5.0	6.0	8.0	
Power source		1 Phase 220-240V, 50Hz							
Power consumption	Cooling	0.06-0.06		0.07-0.07			0.08-0.08	0.08-0.08	
	Heating	0.06-0.06		0.07-0.07			0.08-0.08	0.07-0.07	
Sound power level	dB(A)	52			57	58	59		
Sound pressure level ①	dB(A)	Hi:28 Me:26 Lo:22	Hi:28 Me:26 Lo:22		Hi:33 Me:30 Lo:26	Hi:34 Me:32 Lo:28	Hi:35 Me:33 Lo:30	Hi:35 Me:31 Lo:28	
Sound pressure level ②	dB(A)	Hi:32 Me:29 Lo:25	Hi:32 Me:29 Lo:26		Hi:37 Me:34 Lo:28	Hi:36 Me:33 Lo:27	Hi:38 Me:33 Lo:29	Hi:41 Me:37 Lo:32	
Exterior dimensions H x W x D	mm	200x750x500				200x950x500		220x1150x565	
Net weight	kg	21			22	25		31	
Air flow (Standard)	m <sup>3</sup> /min	Hi:6 Me:5 Lo:4	Hi:7.5 Me:6 Lo:5		Hi:8.5 Me:7 Lo:5.5	Hi:11.5 Me:9 Lo:7	Hi:12.5 Me:9 Lo:7.2	Hi:16 Me:13 Lo:9.5	
External static pressure	Pa	Standard:10, Max:35					Standard:10, Max:50		
Outside air intake		Possible from return duct							
Air filter		Filter set:UT-FL1EF/UT-FL2EF/UT-FL3EF(option)							
Remote control(option)		wired:RC-EX3A, RC-E5, RCH-E3 wireless:RCN-KIT4-E2							
Installation data Refrigerant piping size	mm(in)	Liquid line:ø6.35(1/4") Gas line:ø9.52(3/8")			Liquid line:ø6.35(1/4") Gas line:ø12.7(1/2")		Liquid line:ø9.52(3/8") Gas line:ø15.88(5/8")		

1. The data are measured under the following conditions(ISO-T1). Cooling: Indoor temp. of 27°CDB, 19°CWB, and outdoor temp. of 35°CDB. Heating: Indoor temp. of 20°CDB, and outdoor temp. of 7°CDB, 6°CWB. External static pressure of indoor unit is 10Pa.

2. The data of nominal cooling and heating capacity and sound pressure level are measured with 10Pa of external static pressure.

3. The sound level indicates the value of rear-intake type with duct in anechoic chamber. During operation these values are somewhat higher due to ambient conditions.

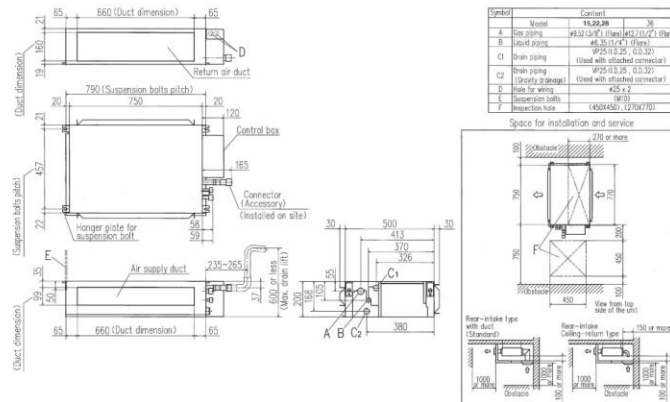
4. Sound pressure levels are values when 2m supply duct and 1m return duct are connected.

①: Mike position is 1.5m below unit. ②: Mike position is 1m in front and 1m below the air supply duct.

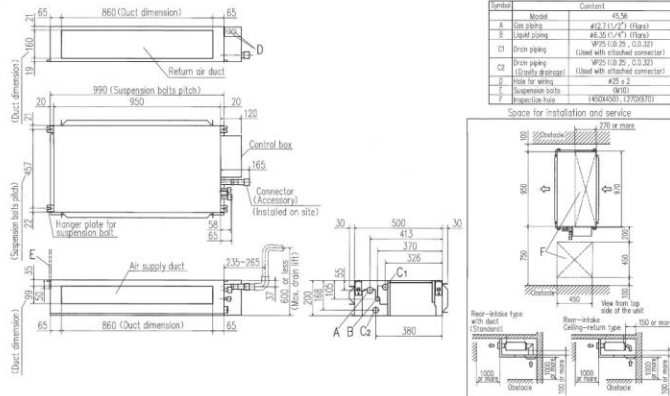
# Dimensions

All measurements in mm.

FDUT15KXE6F-E, 22KXE6F-E, 28KXE6F-E, 36KXE6F-E



FDUT45KXE6F-E, 56KXE6F-E



FDUT71KXE6F-E

