

# CEILING CASSETTE -4way- FDT



FDT 40/50/60/71/100/125/140



Draft Prevention Panel (Option)



\*Not all functions available with all remote control options.

## Point 1 Draft Prevention Panel (Option)

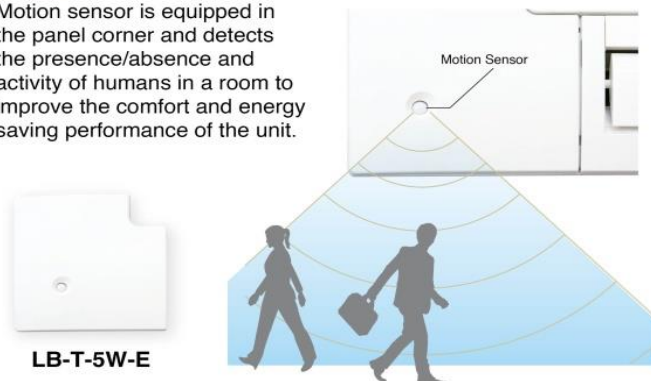
Draft Prevention Panel prevents cold/hot draft being blown directly on the user. It is possible to set Draft Prevention Panel for each air outlet.



User can position Draft Prevention Panel panels by using the remote controller only (RC-EX3A, RCN-T-5AW-E2).

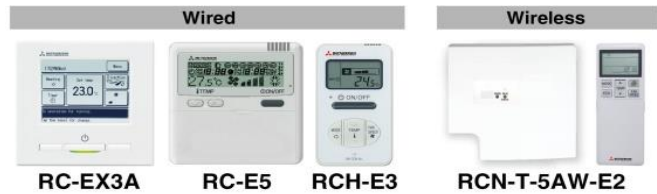
## Point 2 Motion Sensor (Option)

Motion sensor is equipped in the panel corner and detects the presence/absence and activity of humans in a room to improve the comfort and energy saving performance of the unit.



LB-T-5W-E

### Remote control (option)



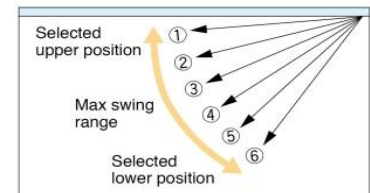
## Point 3 Individual flap control system

According to room conditions, four directions of air flow can be controlled individually by utilizing the flap control system. Individual flap control is available even after installation.



Flap can swing within an upper and lower flap range position within can be selected with a wired remote control.

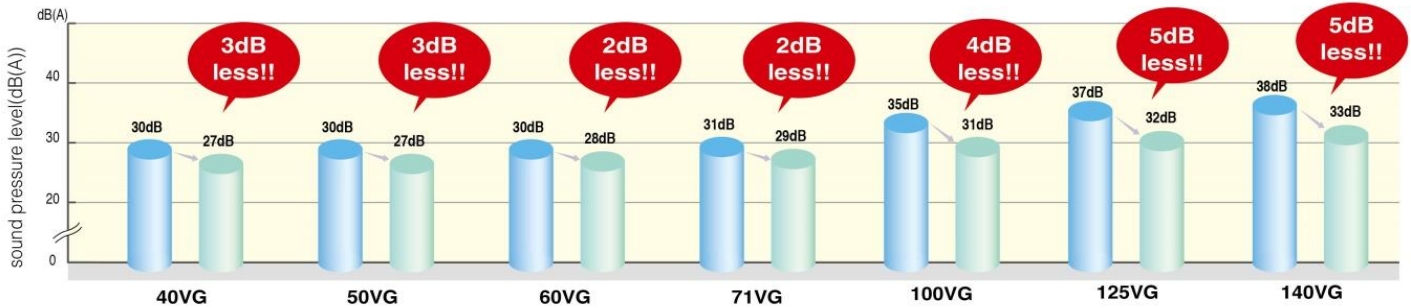
\*The wireless remote control is not applicable to the Individual flap control system.



## Point 4 More quiet noise

New technology has realised quiet noise with keeping capacity and comfort.

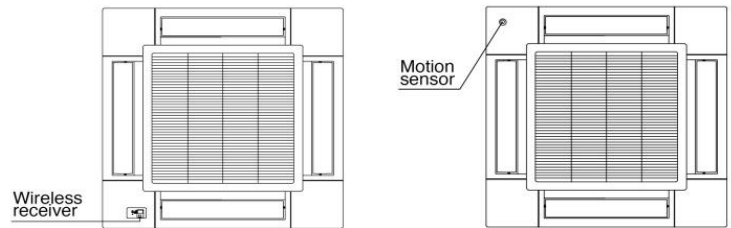
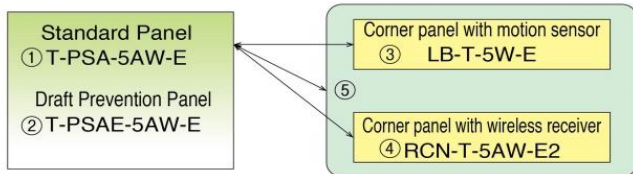
(Comparison of current model)



## Point 5 Panel select pattern (Option)

8 patterns of panel are available.

Installation position of Wireless kit and Motion sensor kit

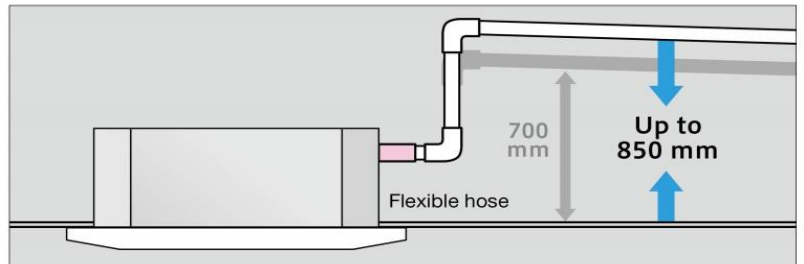


\*Wireless receiver and Motion sensor can be installed to the position as shown

- ① Standard Panel only
- ①+③ Standard Panel with corner panel with motion sensor
- ①+④ Standard Panel with corner panel with wireless receiver
- ①+⑤ Standard Panel with corner panel with motion sensor & corner panel with wireless receiver
- ② Draft Prevention Panel only
- ②+③ Draft Prevention Panel with corner panel with motion sensor
- ②+④ Draft Prevention Panel with corner panel with wireless receiver
- ②+⑤ Draft Prevention Panel with corner panel with motion sensor & corner panel with wireless receiver

## Point 6 850mm Drain Pump

Drain can be discharged upwards by 850mm from the ceiling surface. It allows a piping layout with a high degree of freedom. Depending on the installation location and 185mm flexible hose as a standard equipment supports easy workability.



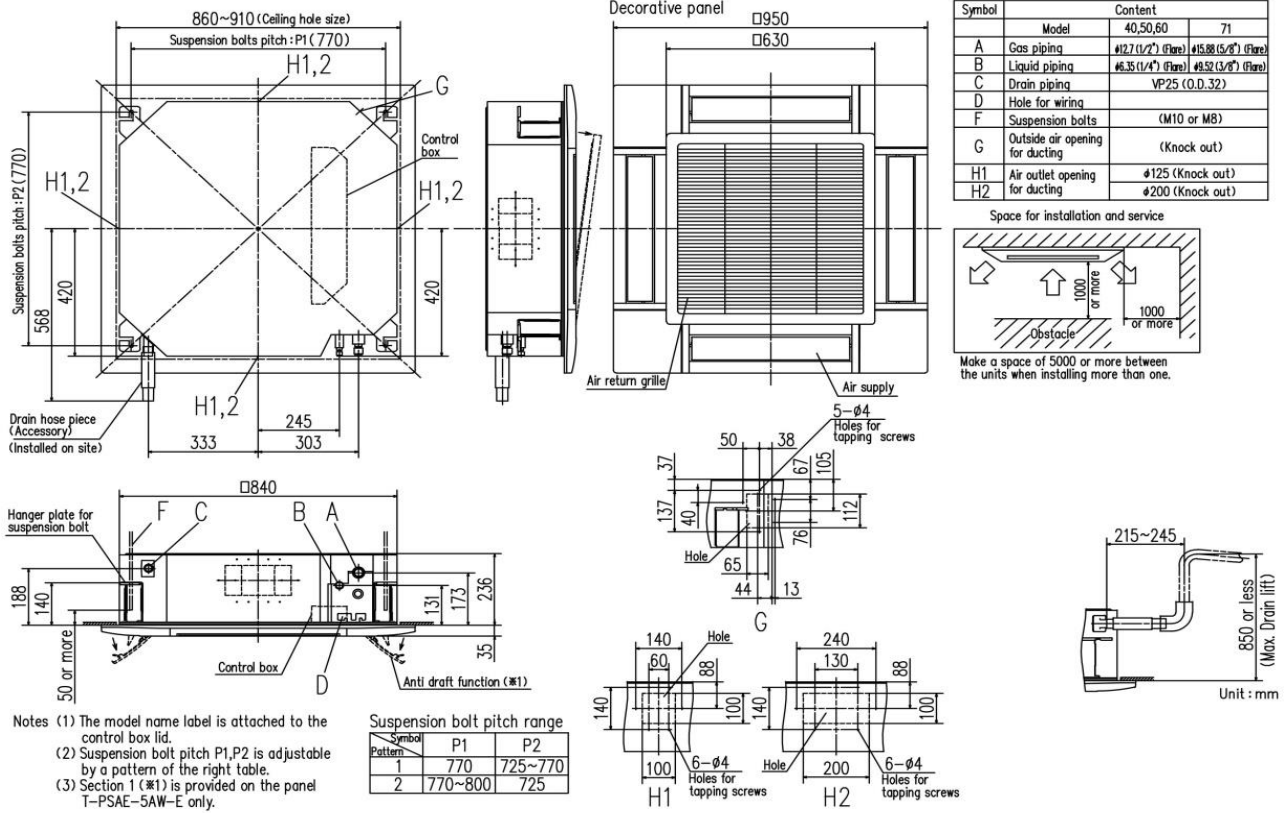
### OUTDOOR UNIT

SRC • FDC	Hyper Inverter			Micro Inverter		
	40~60ZSX	71VNX	100~140VN(S)X	100~140VN(S)A	200VSA	250VSA
model						
Chargeless	15m	30m		30m		
Height x Width x Depth (mm)	640 x 800(+71) x 290	750 x 880(+88) x 340	1,300 x 970 x 370	845 x 970 x 370	1,300 x 970 x 370	1,505 x 970 x 370

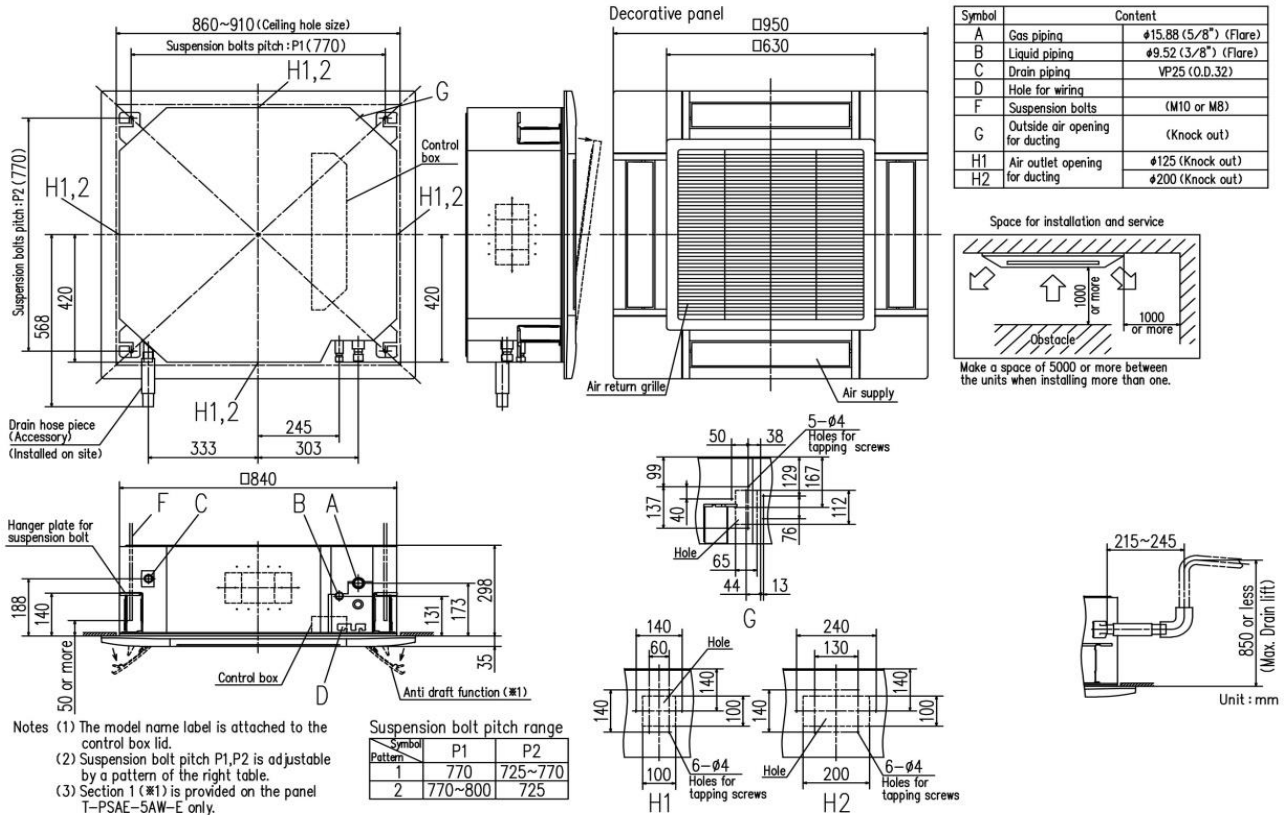
FDC	Standard Inverter		
	71VNP	90VNP1	100VNP
model			
Chargeless	15m		
Height x Width x Depth (mm)	640 x 800(+71) x 290	750 x 880(+88) x 340	845 x 970 x 370

## DIMENSIONS (Unit:mm)

Models FDT40VG,50VG,60VG,71VG



Models FDT100VG,125VG,140VG



## SPECIFICATIONS

		<i>HyperInverter</i>				
Set model name		FDT40ZSXVG	FDT50ZSXVG	FDT60ZSXVG	FDT71VNXVG	
Indoor unit		FDT40VG	FDT50VG	FDT60VG	FDT71VG	
Outdoor unit		SRC40ZSX-S	SRC50ZSX-S	SRC60ZSX-S	FDC71VNX	
Power source		1 Phase 220-240V, 50Hz / 220V, 60Hz				
Nominal cooling capacity (Min~Max)		kW 4.0 ( 1.1 ~ 4.7 )	5.0 ( 1.1 ~ 5.6 )	5.6 ( 1.1 ~ 6.3 )	7.1 ( 3.2 ~ 8.0 )	
Nominal heating capacity (Min~Max)		kW 4.5 ( 0.6 ~ 5.4 )	5.4 ( 0.6 ~ 6.3 )	6.7 ( 0.6 ~ 7.1 )	8.0 ( 3.6 ~ 9.0 )	
Power consumption	Cooling/Heating	kW 0.93 / 1.03	1.29 / 1.29	1.52 / 1.56	1.94 / 1.91	
EER/COP	Cooling/Heating	4.30 / 4.37	3.88 / 4.19	3.68 / 4.29	3.66 / 4.19	
Inrush current		A 5	5	5	5	
Max. current		A 12	15	15	17	
Sound power level*1	Indoor	Cooling/Heating	53 / 53	54 / 54	60 / 60	62 / 62
	Outdoor	Cooling/Heating	63 / 63	63 / 63	65 / 64	66 / 66
Sound pressure level*1	Indoor	Cooling (P-Hi/Hi/Me/Lo)	dB(A) 36 / 33 / 30 / 27	38 / 33 / 30 / 27	44 / 34 / 32 / 28	46 / 35 / 34 / 29
		Heating (P-Hi/Hi/Me/Lo)		38 / 33 / 30 / 27	44 / 34 / 32 / 28	46 / 35 / 34 / 29
Air flow	Indoor	Cooling (P-Hi/Hi/Me/Lo)	m <sup>3</sup> /min 19 / 16 / 13 / 10	20 / 16 / 13 / 10	26 / 17 / 14 / 11	28 / 18 / 15 / 12
		Heating (P-Hi/Hi/Me/Lo)		20 / 16 / 13 / 10	26 / 17 / 14 / 11	28 / 18 / 15 / 12
Exterior dimensions	Indoor	HeightxWidthxDepth	mm	Unit: 236 x 840 x 840 Panel: 35 x 950 x 950		
				Outdoor	640 x 800(+71) x 290	
Net weight	Indoor		kg	24(Unit:19 Standard Panel:5)		26(Unit:21 Standard Panel:5)
				Outdoor	45	
Ref.piping size	Liquid/Gas	ømm	6.35(1/4") / 12.7(1/2")		9.52(3/8") / 15.88(5/8")	
Refrigerant line (one way) length		m	Max.30		Max. 50	
Vertical height differences	Outdoor is higher/lower	m	Max.20 / Max.20		Max.30 / Max.15	
Outdoor operating temperature range	Cooling	°C	-15~46*2		-15~43*3	
	Heating		-20~24		-20~20	
Panel			T-PSA-5AW-E, T-PSAE-5AW-E			
Air filter, Q'ty			Pocket plastic net x 1(Washable)			
Remote control (option)			wired:RC-EX3A, RC-E5, RCH-E3 wireless:RCN-T-5AW-E2			

		<i>HyperInverter</i>						
Set model name		FDT100VNXVG	FDT125VNXVG	FDT140VNXVG	FDT100VSXVG	FDT125VSXVG	FDT140VSXVG	
Indoor unit		FDT100VG	FDT125VG	FDT140VG	FDT100VG	FDT125VG	FDT140VG	
Outdoor unit		FDC100VNX	FDC125VNX	FDC140VNX	FDC100VSX	FDC125VSX	FDC140VSX	
Power source		1 Phase 220-240V, 50Hz / 220V, 60Hz			3 Phase 380-415V, 50Hz / 380V, 60Hz			
Nominal cooling capacity (Min~Max)		kW 10.0 ( 4.0 ~ 11.2 )	12.5 ( 5.0 ~ 14.0 )	14.0 ( 5.0 ~ 16.0 )	10.0 ( 4.0 ~ 11.2 )	12.5 ( 5.0 ~ 14.0 )	14.0 ( 5.0 ~ 16.0 )	
Nominal heating capacity (Min~Max)		kW 11.2 ( 4.0 ~ 12.5 )	14.0 ( 4.0 ~ 17.0 )	16.0 ( 4.0 ~ 18.0 )	11.2 ( 4.0 ~ 16.0 )	14.0 ( 4.0 ~ 18.0 )	16.0 ( 4.0 ~ 20.0 )	
Power consumption	Cooling/Heating	kW 2.50 / 2.58	3.42 / 3.43	4.26 / 4.20	2.50 / 2.58	3.42 / 3.43	4.26 / 4.20	
EER/COP	Cooling/Heating	4.00 / 4.34	3.65 / 4.08	3.29 / 3.81	4.00 / 4.34	3.65 / 4.08	3.29 / 3.81	
Inrush current		A 5	5	5	5	5	5	
Max. current		A 24	26	26	15	15	15	
Sound power level*1	Indoor	Cooling/Heating	63 / 63	64 / 64	64 / 64	63 / 63	64 / 64	64 / 64
	Outdoor	Cooling/Heating	70 / 70	70 / 70	72 / 72	70 / 70	70 / 70	72 / 72
Sound pressure level*1	Indoor	Cooling (P-Hi/Hi/Me/Lo)	dB(A) 48 / 39 / 37 / 31	49 / 41 / 39 / 32	49 / 42 / 39 / 33	48 / 39 / 37 / 31	49 / 41 / 39 / 32	49 / 42 / 39 / 33
		Heating (P-Hi/Hi/Me/Lo)		49 / 41 / 39 / 32	49 / 42 / 39 / 33	48 / 39 / 37 / 31	49 / 41 / 39 / 32	49 / 42 / 39 / 33
Air flow	Indoor	Cooling (P-Hi/Hi/Me/Lo)	m <sup>3</sup> /min 37 / 26 / 23 / 17	38 / 28 / 25 / 18	38 / 29 / 26 / 19	39 / 26 / 23 / 17	38 / 28 / 25 / 18	38 / 29 / 26 / 19
		Heating (P-Hi/Hi/Me/Lo)		38 / 28 / 25 / 18	38 / 29 / 26 / 19	39 / 26 / 23 / 17	38 / 28 / 25 / 18	38 / 29 / 26 / 19
Exterior dimensions	Indoor	HeightxWidthxDepth	mm	Unit: 298 x 840 x 840 Panel: 35 x 950 x 950				
				Outdoor	1,300 x 970 x 370			
Net weight	Indoor		kg	30(Unit:25 Standard Panel:5)				
				Outdoor	105			
Ref.piping size	Liquid/Gas	ømm	9.52(3/8") / 15.88(5/8")					
Refrigerant line (one way) length		m	Max.100					
Vertical height differences	Outdoor is higher/lower	m	Max.30 / Max.15					
Outdoor operating temperature range	Cooling	°C	-15~43*2					
	Heating		-20~20					
Panel			T-PSA-5AW-E, T-PSAE-5AW-E					
Air filter, Q'ty			Pocket plastic net x 1(Washable)					
Remote control (option)			wired:RC-EX3A, RC-E5, RCH-E3 wireless:RCN-T-5AW-E2					

### NOTES:

The data are measured under the following conditions(ISO-T1).

Cooling:Indoor temp. of 27°CDB, 19°CWB, and outdoor temp. of 35°CDB. Heating:Indoor temp. of 20°CDB, and outdoor temp. of 7°CDB, 6°CWB.

\*1 : Indicates the value in an anechoic chamber. During operation these values are somewhat higher due to ambient conditions.

\*2 : If a cooling operation is conducted when the outdoor air temperature is -5°C or lower, the outdoor unit should be installed at a place where it is not influenced by natural wind. If wind blows, the low pressure will drop and compressor frequency will increase, this will cause the capacity to drop and may cause the unit to break down.

## SPECIFICATIONS

The values are for simultaneous Multi operation.

Set model name		Hyper Inverter				
		FDT71VNXPGV	FDT100VNXPGV	FDT125VNXPGV	FDT140VNXPGV	FDT140VNXTVG
		Twin			Triple	
Indoor unit		FDT40VG x 2	FDT50VG x 2	FDT60VG x 2	FDT71VG x 2	FDT50VG x 3
Outdoor unit		FDC71VNX	FDC100VNX	FDC125VNX	FDC140VNX	FDC140VNX
Power source		1 Phase 220-240V, 50Hz / 220V, 60Hz				
Nominal cooling capacity (Min~Max)		kW 7.1 (3.2 ~ 8.0)	10.0 (4.0 ~ 11.2)	12.5 (5.0 ~ 14.0)	14.0 (5.0 ~ 16.0)	14.0 (5.0 ~ 16.0)
Nominal heating capacity (Min~Max)		kW 8.0 (3.6 ~ 9.0)	11.2 (4.0 ~ 12.5)	14.0 (4.0 ~ 17.0)	16.0 (4.0 ~ 18.0)	16.0 (4.0 ~ 18.0)
Power consumption		Cooling/Heating kW 1.85 / 1.99	2.56 / 2.67	3.26 / 3.22	3.88 / 3.74	3.93 / 4.00
EER/COP		Cooling/Heating 3.84 / 4.02	3.91 / 4.19	3.83 / 4.35	3.61 / 4.28	3.56 / 4.00
Inrush current		A 5	5	5	5	5
Max. current		17	24	26	26	26
Sound power level*1	Indoor*2	Cooling/Heating	53 / 53	54 / 54	60 / 60	62 / 62
	Outdoor	Cooling/Heating	66 / 66	70 / 70	70 / 70	72 / 72
Sound pressure level*1	Indoor*2	Cooling (P-Hi/Hi/Me/Lo)	36 / 33 / 30 / 27	38 / 33 / 30 / 27	44 / 34 / 32 / 28	46 / 35 / 34 / 29
		Heating (P-Hi/Hi/Me/Lo)	36 / 33 / 30 / 27	38 / 33 / 30 / 27	44 / 34 / 32 / 28	46 / 35 / 34 / 29
	Outdoor	Cooling/Heating	51 / 48	48 / 50	48 / 50	49 / 52
		Cooling/Heating	19 / 16 / 13 / 10	20 / 16 / 13 / 10	26 / 17 / 14 / 11	28 / 18 / 15 / 12
Air flow	Indoor*2	Cooling (P-Hi/Hi/Me/Lo)	19 / 16 / 13 / 10	20 / 16 / 13 / 10	26 / 17 / 14 / 11	28 / 18 / 15 / 12
		Heating (P-Hi/Hi/Me/Lo)	19 / 16 / 13 / 10	20 / 16 / 13 / 10	26 / 17 / 14 / 11	28 / 18 / 15 / 12
	Outdoor	Cooling/Heating	60 / 50	100 / 100	100 / 100	100 / 100
Exterior dimensions	Indoor	Unit: 236 x 840 x 840 Panel: 35 x 950 x 950				
	Outdoor	HeightxWidthxDepth mm	750 x 880(+88) x 340	1,300 x 970 x 370		
Net weight	Indoor	24(Unit:19 Standard Panel:5)		26(Unit:21 Standard Panel:5)		24(Unit:19 Standard Panel:5)
	Outdoor	105				
Ref.piping size	Liquid/Gas	ømm 9.52(3/8") / 15.88(5/8")				
Refrigerant line (one way) length		Max. 50		Max. 100		
Vertical height differences	Outdoor is higher/lower	m Max.30 / Max.15				
Outdoor operating temperature range	Cooling	°C -15~43*3				
	Heating	-20~20				
Panel	T-PSA-5AW-E, T-PSAE-5AW-E					
Air filter, Q'ty	Pocket plastic net x 1(Washable)					
Remote control (option)	wired:RC-EX3A, RC-E5, RCH-E3 wireless:RCN-T-5AW-E2					

The values are for simultaneous Multi operation.

Set model name		Hyper Inverter			
		FDT100VSXPGV	FDT125VSXPGV	FDT140VSXPGV	FDT140VSXTVG
		Twin		Triple	
Indoor unit		FDT50VG x 2	FDT60VG x 2	FDT71VG x 2	FDT50VG x 3
Outdoor unit		FDC100VSX	FDC125VSX	FDC140VSX	FDC140VSX
Power source		3 Phase 380-415V, 50Hz / 380V, 60Hz			
Nominal cooling capacity (Min~Max)		kW 10.0 (4.0 ~ 11.2)	12.5 (5.0 ~ 14.0)	14.0 (5.0 ~ 16.0)	14.0 (5.0 ~ 16.0)
Nominal heating capacity (Min~Max)		kW 11.2 (4.0 ~ 16.0)	14.0 (4.0 ~ 18.0)	16.0 (4.0 ~ 20.0)	16.0 (4.0 ~ 20.0)
Power consumption		Cooling/Heating kW 2.56 / 2.67	3.26 / 3.22	3.88 / 3.74	3.93 / 4.00
EER/COP		Cooling/Heating 3.91 / 4.19	3.83 / 4.35	3.61 / 4.28	3.56 / 4.00
Inrush current		A 5	5	5	5
Max. current		15	15	15	15
Sound power level*1	Indoor*2	Cooling/Heating	54 / 54	60 / 60	62 / 62
	Outdoor	Cooling/Heating	70 / 70	70 / 70	72 / 72
Sound pressure level*1	Indoor*2	Cooling (P-Hi/Hi/Me/Lo)	38 / 33 / 30 / 27	44 / 34 / 32 / 28	46 / 35 / 34 / 29
		Heating (P-Hi/Hi/Me/Lo)	38 / 33 / 30 / 27	44 / 34 / 32 / 28	46 / 35 / 34 / 29
	Outdoor	Cooling/Heating	48 / 50	48 / 50	49 / 52
		Cooling/Heating	20 / 16 / 13 / 10	26 / 17 / 14 / 11	28 / 18 / 15 / 12
Air flow	Indoor*2	Cooling (P-Hi/Hi/Me/Lo)	20 / 16 / 13 / 10	26 / 17 / 14 / 11	28 / 18 / 15 / 12
		Heating (P-Hi/Hi/Me/Lo)	20 / 16 / 13 / 10	26 / 17 / 14 / 11	28 / 18 / 15 / 12
	Outdoor	Cooling/Heating	100 / 100	100 / 100	100 / 100
Exterior dimensions	Indoor	Unit: 236 x 840 x 840 Panel: 35 x 950 x 950			
	Outdoor	HeightxWidthxDepth mm	1,300 x 970 x 370		
Net weight	Indoor	24(Unit:19 Standard Panel:5)		26(Unit:21 Standard Panel:5)	
	Outdoor	105			
Ref.piping size	Liquid/Gas	ømm 9.52(3/8") / 15.88(5/8")			
Refrigerant line (one way) length		m Max.100			
Vertical height differences	Outdoor is higher/lower	m Max.30 / Max.15			
Outdoor operating temperature range	Cooling	°C -15~43*3			
	Heating	-20~20			
Panel	T-PSA-5AW-E, T-PSAE-5AW-E				
Air filter, Q'ty	Pocket plastic net x 1(Washable)				
Remote control (option)	wired:RC-EX3A, RC-E5, RCH-E3 wireless:RCN-T-5AW-E2				

### NOTES:

The data are measured under the following conditions(ISO-T1).  
 Cooling:Indoor temp. of 27°CDB, 19°CWB, and outdoor temp. of 35°CDB. Heating:Indoor temp. of 20°CDB, and outdoor temp. of 7°CDB, 6°CWB.  
 \*1 : Indicates the value in an anechoic chamber. During operation these values are somewhat higher due to ambient conditions.  
 \*2 : The values are for one indoor unit operation. (Multi system only)  
 \*3 : If a cooling operation is conducted when the outdoor air temperature is -5°C or lower, the outdoor unit should be installed at a place where it is not influenced by natural wind. If wind blows, the low pressure will drop and compressor frequency will increase, this will cause the capacity to drop and may cause the unit to break down.

## SPECIFICATIONS

		Micro Inverter					
Set model name		FDT100VNAV	FDT125VNAV	FDT140VNAV	FDT100VSAV	FDT125VSAV	FDT140VSAV
Indoor unit		FDT100VG	FDT125VG	FDT140VG	FDT100VSA	FDT125VSA	FDT140VSA
Outdoor unit		FDC100VNA	FDC125VNA	FDC140VNA	FDC100VSA	FDC125VSA	FDC140VSA
Power source		1 Phase 220-240V, 50Hz / 220V, 60Hz			3 Phase 380-415V, 50Hz / 380V, 60Hz		
Nominal cooling capacity (Min~Max)		kW 10.0 ( 4.0 ~ 11.2 )	12.5 ( 5.0 ~ 14.0 )	13.6 ( 5.0 ~ 14.5 )	10.0 ( 4.0 ~ 11.2 )	12.5 ( 5.0 ~ 14.0 )	13.6 ( 5.0 ~ 14.5 )
Nominal heating capacity (Min~Max)		kW 11.2 ( 4.0 ~ 12.5 )	14.0 ( 4.0 ~ 16.0 )	15.5 ( 4.0 ~ 16.5 )	11.2 ( 4.0 ~ 12.5 )	14.0 ( 4.0 ~ 16.0 )	15.5 ( 4.0 ~ 16.5 )
Power consumption	Cooling/Heating	kW 2.73 / 2.64	4.05 / 3.74	4.84 / 4.43	2.73 / 2.63	4.05 / 3.74	4.84 / 4.43
EER/COP	Cooling/Heating	3.66 / 4.26	3.09 / 3.74	2.81 / 3.50	3.66 / 4.26	3.09 / 3.74	2.81 / 3.50
Inrush current		A 5	5	5	5	5	5
Max. current		24	24	24	15	15	15
Sound power level*1	Indoor	Cooling/Heating	63 / 63	64 / 64	64 / 64	63 / 63	64 / 64
	Outdoor	Cooling/Heating	70 / 70	71 / 71	73 / 73	70 / 70	71 / 71
Sound pressure level*1	Indoor	Cooling (P-Hi/Hi/Me/Lo)	dB(A) 48 / 39 / 37 / 31	49 / 41 / 39 / 32	49 / 42 / 39 / 33	48 / 39 / 37 / 31	49 / 41 / 39 / 32
		Heating (P-Hi/Hi/Me/Lo)	48 / 39 / 37 / 31	49 / 41 / 39 / 32	49 / 42 / 39 / 33	48 / 39 / 37 / 31	49 / 41 / 39 / 32
Air flow	Indoor	Cooling (P-Hi/Hi/Me/Lo)	m³/min 37 / 26 / 23 / 17	38 / 28 / 25 / 18	38 / 29 / 26 / 19	37 / 26 / 23 / 17	38 / 28 / 25 / 18
		Heating (P-Hi/Hi/Me/Lo)	37 / 26 / 23 / 17	38 / 28 / 25 / 18	38 / 29 / 26 / 19	37 / 26 / 23 / 17	38 / 28 / 25 / 18
Exterior dimensions	Indoor	HeightxWidthxDepth	mm	Unit: 298 x 840 x 840 Panel: 35 x 950 x 950			
				845 x 970 x 370			
Net weight	Indoor		kg	30(Unit:25 Standard Panel:5)			
				Outdoor		kg	80
Ref.piping size	Liquid/Gas	ømm	9.52(3/8") / 15.88(5/8")				
Refrigerant line (one way) length		m	Max.50				
Vertical height differences		Outdoor is higher/lower	m	Max.50 / Max.15			
Outdoor operating temperature range	Cooling	°C	-15~50*3				
	Heating	°C	-20~20				
Panel		T-PSA-5AW-E, T-PSAE-5AW-E					
Air filter, Q'ty		Pocket plastic net x 1(Washable)					
Remote control (option)		wired:RC-EX3A, RC-E5, RCH-E3 wireless:RCN-T-5AW-E2					

The values are for simultaneous Multi operation.

		Micro Inverter				
Set model name		FDT100VNAPVG	FDT125VNAPVG	FDT140VNAPVG	FDT140VNATVG	
Indoor unit		FDT50VG x 2	FDT60VG x 2	FDT71VG x 2	FDT50VG x 3	
Outdoor unit		FDC100VNA	FDC125VNA	FDC140VNA	FDC140VNA	
Power source		1 Phase 220-240V, 50Hz / 220V, 60Hz				
Nominal cooling capacity (Min~Max)		kW 10.0 ( 4.0 ~ 11.2 )	12.5 ( 5.0 ~ 14.0 )	13.6 ( 5.0 ~ 14.5 )	13.6 ( 5.0 ~ 14.5 )	
Nominal heating capacity (Min~Max)		kW 11.2 ( 4.0 ~ 12.5 )	14.0 ( 4.0 ~ 16.0 )	15.5 ( 4.0 ~ 16.5 )	15.5 ( 4.0 ~ 16.5 )	
Power consumption	Cooling/Heating	kW 2.82 / 2.90	3.79 / 3.31	4.22 / 3.29	4.22 / 3.29	
EER/COP	Cooling/Heating	3.55 / 3.86	3.30 / 4.23	3.22 / 4.71	3.22 / 4.71	
Inrush current		A 5	5	5	5	
Max. current		24	24	24	24	
Sound power level*1	Indoor*2	Cooling/Heating	54 / 54	60 / 60	62 / 62	
	Outdoor	Cooling/Heating	70 / 70	71 / 71	73 / 73	
Sound pressure level*1	Indoor*2	Cooling (P-Hi/Hi/Me/Lo)	dB(A) 38 / 33 / 30 / 27	44 / 34 / 32 / 28	46 / 35 / 34 / 29	
		Heating (P-Hi/Hi/Me/Lo)	38 / 33 / 30 / 27	44 / 34 / 32 / 28	46 / 35 / 34 / 29	
Air flow	Indoor*2	Cooling (P-Hi/Hi/Me/Lo)	m³/min 20 / 16 / 13 / 10	26 / 17 / 14 / 11	28 / 18 / 15 / 12	
		Heating (P-Hi/Hi/Me/Lo)	20 / 16 / 13 / 10	26 / 17 / 14 / 11	28 / 18 / 15 / 12	
Exterior dimensions	Indoor	HeightxWidthxDepth	mm	Unit: 236 x 840 x 840 Panel: 35 x 950 x 950		
				845 x 970 x 370		
Net weight	Indoor		kg	24(Unit:19 Standard Panel:5)		
				Outdoor		kg
Ref.piping size	Liquid/Gas	ømm	9.52(3/8") / 15.88(5/8")			
Refrigerant line (one way) length		m	Max.50			
Vertical height differences		Outdoor is higher/lower	m	Max.50 / Max.15		
Outdoor operating temperature range	Cooling	°C	-15~50*3			
	Heating	°C	-20~20			
Panel		T-PSA-5AW-E, T-PSAE-5AW-E				
Air filter, Q'ty		Pocket plastic net x 1(Washable)				
Remote control (option)		wired:RC-EX3A, RC-E5, RCH-E3 wireless:RCN-T-5AW-E2				

## SPECIFICATIONS

The values are for simultaneous Multi operation.

Set model name		Micro Inverter		
		FDT100VSAPVG	FDT125VSAPVG	FDT140VSAPVG
Indoor unit		FDT50VG x 2	FDT60VG x 2	FDT71VG x 2
Outdoor unit		FDC100VSA	FDC125VSA	FDC140VSA
Power source		3 Phase 380-415V, 50Hz / 380V, 60Hz		
Nominal cooling capacity (Min~Max)		10.0 ( 4.0 ~ 11.2 )	12.5 ( 5.0 ~ 14.0 )	13.6 ( 5.0 ~ 14.5 )
Nominal heating capacity (Min~Max)		11.2 ( 4.0 ~ 12.5 )	14.0 ( 4.0 ~ 16.0 )	15.5 ( 4.0 ~ 16.5 )
Power consumption	Cooling/Heating	2.82 / 2.90	3.79 / 3.31	4.22 / 3.29
EER/COP	Cooling/Heating	3.55 / 3.86	3.30 / 4.23	3.22 / 4.71
Inrush current		5	5	5
Max. current		15	15	15
Sound power level*1	Indoor*2	Cooling/Heating	54 / 54	60 / 60
	Outdoor	Cooling/Heating	70 / 70	71 / 71
Sound pressure level*1	Indoor*2	Cooling (P-Hi/Hi/Me/Lo)	38 / 33 / 30 / 27	44 / 34 / 32 / 28
	Outdoor	Heating (P-Hi/Hi/Me/Lo)	38 / 33 / 30 / 27	44 / 34 / 32 / 28
Air flow	Indoor*2	Cooling/Heating	54 / 56	55 / 57
	Outdoor	Cooling/Heating	20 / 16 / 13 / 10	26 / 17 / 14 / 11
Exterior dimensions	Indoor	HeightxWidthxDepth	20 / 16 / 13 / 10	26 / 17 / 14 / 11
	Outdoor	HeightxWidthxDepth	75 / 73	75 / 73
Net weight			Unit: 236 x 840 x 840 Panel: 35 x 950 x 950	
Ref.piping size		Liquid/Gas	845 x 970 x 370	
Refrigerant line (one way) length			24(Unit:19 Standard Panel:5)	
Vertical height differences		Outdoor is higher/lower	26(Unit:21 Standard Panel:5)	
Outdoor operating temperature range		Cooling	82	
		Heating	9.52(3/8") / 15.88(5/8")	
Panel			Max.50	
Air filter, Q'ty			Max.50 / Max.15	
Remote control (option)			-15~50*3	
			-20~20	
			T-PSA-5AW-E, T-PSAE-5AW-E	
			Pocket plastic net x 1(Washable)	
			wired:RC-EX3A, RC-E5, RCH-E3 wireless:RCN-T-5AW-E2	

The values are for simultaneous Multi operation.

Set model name		Micro Inverter		
		FDT200VSAPVG	FDT250VSAPVG	FDT140VSATVG
Indoor unit		FDT100VG x 2	FDT125VG x 2	FDT50VG x 3
Outdoor unit		FDC200VSA	FDC250VSA	FDC140VSA
Power source		3 Phase 380-415V, 50Hz / 380V, 60Hz		
Nominal cooling capacity (Min~Max)		19.0 ( 5.2 ~ 22.4 )	24.0 ( 6.9 ~ 28.0 )	13.6 ( 5.0 ~ 14.5 )
Nominal heating capacity (Min~Max)		22.4 ( 3.3 ~ 25.0 )	27.0 ( 5.5 ~ 31.5 )	15.5 ( 4.0 ~ 16.5 )
Power consumption	Cooling/Heating	6.25 / 6.02	8.36 / 7.15	4.22 / 3.29
EER/COP	Cooling/Heating	3.04 / 3.72	2.87 / 3.78	3.22 / 4.71
Inrush current		5	5	5
Max. current		20	21	15
Sound power level*1	Indoor*2	Cooling/Heating	63 / 63	64 / 64
	Outdoor	Cooling/Heating	72 / 74	73 / 75
Sound pressure level*1	Indoor*2	Cooling (P-Hi/Hi/Me/Lo)	48 / 39 / 37 / 31	49 / 41 / 39 / 32
	Outdoor	Heating (P-Hi/Hi/Me/Lo)	48 / 39 / 37 / 31	49 / 41 / 39 / 32
Air flow	Indoor*2	Cooling/Heating	58 / 59	59 / 62
	Outdoor	Cooling/Heating	37 / 26 / 23 / 17	38 / 28 / 25 / 18
Exterior dimensions	Indoor	HeightxWidthxDepth	37 / 26 / 23 / 17	38 / 28 / 25 / 18
	Outdoor	HeightxWidthxDepth	135 / 135	143 / 151
Net weight			Unit: 298 x 840 x 840 Panel: 35 x 950 x 950	
Ref.piping size		Liquid/Gas	Unit: 236 x 840 x 840 Panel: 35 x 950 x 950	
Refrigerant line (one way) length			1,300 x 970 x 370	
Vertical height differences		Outdoor is higher/lower	1,505 x 970 x 370	
Outdoor operating temperature range		Cooling	82	
		Heating	9.52(3/8") / 22.22(7/8")	
Panel			Max.70	
Air filter, Q'ty			Max.30 / Max.15	
Remote control (option)			Max.50 / Max.15	
			-15~20	
			-15~50*3	
			-20~20	
			T-PSA-5AW-E, T-PSAE-5AW-E	
			Pocket plastic net x 1(Washable)	
			wired:RC-EX3A, RC-E5, RCH-E3 wireless:RCN-T-5AW-E2	

### NOTES:

The data are measured under the following conditions(ISO-T1).  
 Cooling:Indoor temp. of 27°CDB, 19°CWB, and outdoor temp. of 35°CDB. Heating:Indoor temp. of 20°CDB, and outdoor temp. of 7°CDB, 6°CWB.  
 \*1 : Indicates the value in an anechoic chamber. During operation these values are somewhat higher due to ambient conditions.  
 \*2 : The values are for one indoor unit operation. (Multi system only)  
 \*3 : If a cooling operation is conducted when the outdoor air temperature is -5°C or lower, the outdoor unit should be installed at a place where it is not influenced by natural wind. If wind blows, the low pressure will drop and compressor frequency will increase, this will cause the capacity to drop and may cause the unit to break down.

## SPECIFICATIONS

The values are for simultaneous Multi operation.

Set model name		Micro Inverter		
		FDT200VSATVG	FDT200VSADVG	FDT250VSADVG
Indoor unit		FDT71VG x 3	FDT50VG x 4	FDT60VG x 4
Outdoor unit		FDC200VSA	FDC200VSA	FDC250VSA
Power source		3 Phase 380-415V, 50Hz / 380V, 60Hz		
Nominal cooling capacity (Min~Max)	kW	19.0 ( 5.2 ~ 22.4 )	19.0 ( 5.2 ~ 22.4 )	24.0 ( 6.9 ~ 28.0 )
Nominal heating capacity (Min~Max)	kW	22.4 ( 3.3 ~ 25.0 )	22.4 ( 3.3 ~ 25.0 )	27.0 ( 5.5 ~ 31.5 )
Power consumption	Cooling/Heating kW	6.01 / 5.76	6.26 / 6.15	7.42 / 6.83
EER/COP	Cooling/Heating	3.16 / 3.89	3.04 / 3.64	3.23 / 3.95
Inrush current		5	5	5
Max. current		20	20	21
Sound power level*1	Indoor*2	Cooling/Heating	62 / 62	54 / 54
	Outdoor	Cooling/Heating	72 / 74	73 / 75
Sound pressure level*1	Indoor*2	Cooling (P-Hi/Hi/Me/Lo)	46 / 35 / 34 / 29	44 / 34 / 32 / 28
	Outdoor	Heating (P-Hi/Hi/Me/Lo)	46 / 35 / 34 / 29	44 / 34 / 32 / 28
Air flow	Indoor*2	Cooling/Heating	58 / 59	59 / 62
	Outdoor	Cooling (P-Hi/Hi/Me/Lo)	28 / 18 / 15 / 12	26 / 17 / 14 / 11
		Heating (P-Hi/Hi/Me/Lo)	28 / 18 / 15 / 12	26 / 17 / 14 / 11
		Cooling/Heating	135 / 135	143 / 151
Exterior dimensions	Indoor	HeightxWidthxDepth	Unit: 236 x 840 x 840 Panel: 35 x 950 x 950	
	Outdoor		1,300 x 970 x 370	
Net weight	Indoor		26(Unit:21 Standard Panel:5)	24(Unit:19 Standard Panel:5)
	Outdoor		115	
Ref.piping size	Liquid/Gas	ømm	9.52(3/8") / 22.22(7/8")	
Refrigerant line (one way) length		m	Max.70	
Vertical height differences	Outdoor is higher/lower	m	Max.30 / Max.15	
Outdoor operating temperature range	Cooling	°C	-15-50*3	
	Heating		-15-20	
Panel			T-PSA-5AW-E, T-PSAE-5AW-E	
Air filter, Q'ty			Pocket plastic net x 1(Washable)	
Remote control (option)			wired:RC-EX3A, RC-E5, RCH-E3 wireless:RCN-T-5AW-E2	

Set model name		Standard Inverter		
		FDT71VNPVG	FDT90VNP1VG	FDT100VNP1VG
Indoor unit		FDT71VG	FDT100VG	FDT100VG
Outdoor unit		FDC71VNP	FDC90VNP1	FDC100VNP
Power source		1 Phase 220-240V, 50Hz / 220V, 60Hz		
Nominal cooling capacity (Min~Max)	kW	7.1 ( 1.4 ~ 7.1 )	9.0 ( 1.9 ~ 9.0 )	10.0 ( 2.8 ~ 11.2 )
Nominal heating capacity (Min~Max)	kW	7.1 ( 1.0 ~ 7.1 )	9.0 ( 1.5 ~ 9.0 )	11.2 ( 2.5 ~ 12.5 )
Power consumption	Cooling/Heating kW	2.31 / 1.73	2.67 / 2.19	2.76 / 2.84
EER/COP	Cooling/Heating	3.07 / 4.10	3.37 / 4.11	3.62 / 3.94
Inrush current		5	5	5
Max. current		14.5	18.0	21.0
Sound power level*1	Indoor	Cooling/Heating	62 / 62	63 / 63
	Outdoor	Cooling/Heating	67 / 67	70 / 70
Sound pressure level*1	Indoor	Cooling (P-Hi/Hi/Me/Lo)	46 / 35 / 34 / 29	48 / 39 / 37 / 31
	Outdoor	Heating (P-Hi/Hi/Me/Lo)	46 / 35 / 34 / 29	48 / 39 / 37 / 31
Air flow	Indoor	Cooling/Heating	54 / 54	57 / 61
	Outdoor	Cooling (P-Hi/Hi/Me/Lo)	28 / 18 / 15 / 12	37 / 26 / 23 / 17
		Heating (P-Hi/Hi/Me/Lo)	28 / 18 / 15 / 12	37 / 26 / 23 / 17
		Cooling/Heating	36 / 36	63 / 49.5
Exterior dimensions	Indoor	HeightxWidthxDepth	Unit: 236 x 840 x 840 Panel: 35 x 950 x 950	
	Outdoor		Unit: 298 x 840 x 840 Panel: 35 x 950 x 950	
Net weight	Indoor		26(Unit:21 Standard Panel:5)	30(Unit:25 Standard Panel:5)
	Outdoor		45	
Ref.piping size	Liquid/Gas	ømm	6.35(1/4") / 12.7(1/2")	
Refrigerant line (one way) length		m	Max.30	
Vertical height differences	Outdoor is higher/lower	m	Max.20 / Max.20	
Outdoor operating temperature range	Cooling	°C	-15-46*3	
	Heating		-15-20	
Panel			T-PSA-5AW-E, T-PSAE-5AW-E	
Air filter, Q'ty			Pocket Plastic net x1(Washable)	
Remote control (option)			wired:RC-EX3A, RC-E5, RCH-E3 wireless:RCN-T-5AW-E2	