

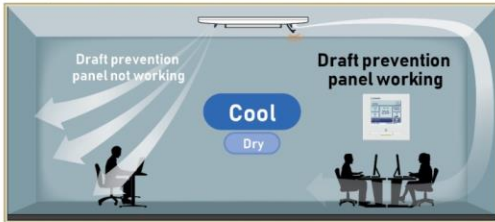
CEILING CASSETTE FDT

-4WAY-



Draft Prevention Panel (Option)

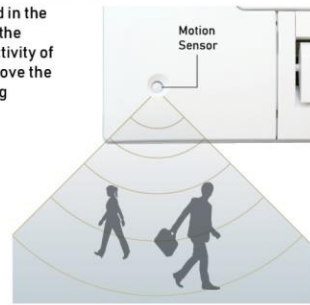
Draft Prevention Panel prevents cold draft being blown directly on the user. It is possible to set Draft Prevention Panel for each air outlet.



User can position Draft Prevention Panel panels by using the remote controller only (RC-EX3A, RCN-T-5AW-E2).

Motion Sensor (Option)

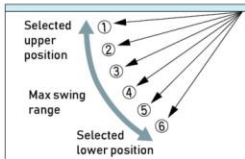
Motion sensor is equipped in the panel corner and detects the presence/absence and activity of humans in a room to improve the comfort and energy saving performance of the unit.



LB-T-5W-E

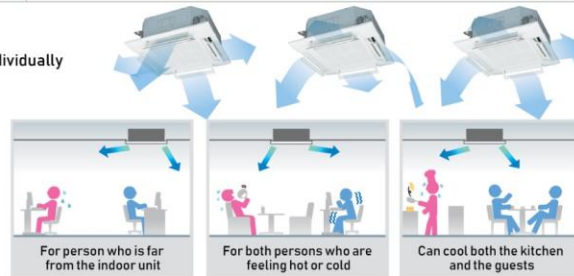
Individual Flap Control System

According to room conditions, four directions of air flow can be controlled individually by utilizing the flap control system. Individual flap control is available even after installation.

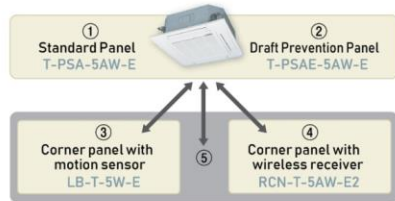


Flap can swing within an upper and lower flap range position within can be selected with a wired remote control.

The wireless remote control is not applicable to the Individual flap control system.



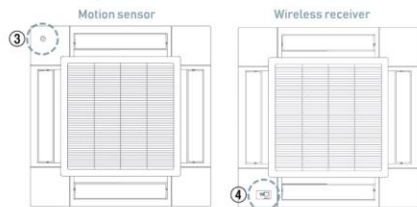
Panel Select Pattern (Option)



8 patterns of panel are available.

- ① Standard Panel only
- ①+③ Standard Panel with corner panel with motion sensor
- ①+④ Standard Panel with corner panel with wireless receiver
- ①+⑤ Standard Panel with corner panel with motion sensor & corner panel with wireless receiver
- ② Draft Prevention Panel only
- ②+③ Draft Prevention Panel with corner panel with motion sensor
- ②+④ Draft Prevention Panel with corner panel with wireless receiver
- ②+⑤ Draft Prevention Panel with corner panel with motion sensor & corner panel with wireless receiver

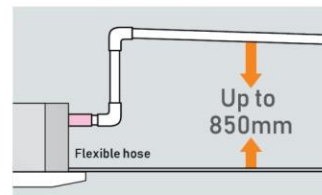
Installation position of Wireless kit and Motion sensor kit



*Wireless receiver and Motion sensor can be installed to the position as shown

850 mm Drain Pump

Drain can be discharged upwards by 850mm from the ceiling surface. It allows a piping layout with a high degree of freedom. Depending on the installation location and 185mm flexible hose as a standard equipment supports easy workability.





FDT50/71CNVX-S
FDT50/71/100CNV-S
FDT100/125/140CSV-S



SPECIFICATIONS

		FDT SERIES	
		HI-COP	
Indoor unit		FDT50CNVX-S	FDT71CNVX-S
Outdoor unit		FDC50CNVX-S	FDC71CNVX-S
Power source		1 Phase, 220-240V, 50Hz	1 Phase, 220-240V, 50Hz
Capacity	kW	5.4	7.1
Power consumption	kW	1.43	1.91
COP	W/W	3.78	3.72
Inrush current / Max. current		A	34 / 8.2
Indoor unit	Airflow rate (PHi/Hi/Me/Lo)	m ³ /min	22/19/16/14
	Sound pressure level (PHi/Hi/Me/Lo)	dB(A)	37/35/34/32
	Exterior dimensions (HxWxD)	mm	236 x 840 x 840
	Net weight	kg	22
Outdoor unit	Airflow rate	m ³ /min	38
	Sound pressure level	dB(A)	51
	Exterior dimensions (HxWxD)	mm	640 x 800(+71) x 290
	Net weight	kg	45
Refrigerant type	type	R410A	
	charge amount	kg (m)	1.40 (15m)
Piping size (Liquid/Gas)	mm	φ6.35 / φ15.88	φ6.35 / φ15.88
Refrigerant line (one way) length	m	30	30
Vertical height differences	Outdoor is Higher/Lower	m	Max.10 / Max.10
Outdoor operating temperature range	°C	21-43	21-43

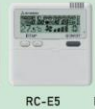
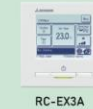


Draft Prevention Panel (Option)

REMOTE CONTROL

Wireless (option)

Wired (option)



RCN-T-5AW-E2

RC-EX3A

RC-E5

RCH-E3



FDC50/71CNV-S
FDC50CNVX-S

FDC71CNVX-S

FDC100CNV-S
FDC100/125CSV-S

FDC140CSV-S

SPECIFICATIONS

		FDT SERIES						
		STANDARD						
Indoor unit		FDT50CNV-S	FDT71CNV-S	FDT100CNV-S	FDT100CSV-S	FDT125CSV-S	FDT140CSV-S	
Outdoor unit		FDC50CNV-S	FDC71CNV-S	FDC100CNV-S	FDC100CSV-S	FDC125CSV-S	FDC140CSV-S	
Power source		1 Phase, 220-240V, 50Hz	1 Phase, 220-240V, 50Hz	1 Phase, 220-240V, 50Hz	3 Phase, 380-415V, 50Hz	3 Phase, 380-415V, 50Hz	3 Phase, 380-415V, 50Hz	
Capacity	kW	5.0	7.3	10.5	10.4	13.0	14.5	
Power consumption	kW	1.55	2.25	2.91	2.88	4.16	4.50	
COP	W/W	3.23	3.24	3.61	3.61	3.13	3.22	
Inrush current / Max. current		A	34 / 8.2	44 / 13	58.7 / 17.3	16.4 / 5.8	49.7 / 9.6	
Indoor unit	Airflow rate (PHi/Hi/Me/Lo)	m ³ /min	22/20/17/15	32/26/21/17	31/26/23/17	31/26/23/17	31/28/25/18	
	Sound pressure level (PHi/Hi/Me/Lo)	dB(A)	39/38/37/34	46/43/39/37	43/40/38/34	44/40/38/34	44/41/39/36	
	Exterior dimensions (HxWxD)	mm	236 x 840 x 840	236 x 840 x 840	298 x 840 x 840	298 x 840 x 840	298 x 840 x 840	
	Net weight	kg	20	22	25	25	25	
Outdoor unit	Airflow rate	m ³ /min	38	37	75	75	132	
	Sound pressure level	dB(A)	51	56	55	57	58	
	Exterior dimensions (HxWxD)	mm	640 x 800(+71) x 290	640 x 800(+71) x 290	845 x 970 x 370	845 x 970 x 370	845 x 970 x 370	
	Net weight	kg	42	46	77.5	79	85	
Refrigerant type	type	R410A						
	charge amount	kg (m)	1.00 (10m)	1.40 (15m)	2.40 (30m)	2.65 (30m)	2.15 (30m)	3.10 (30m)
Piping size (Liquid/Gas)	mm	φ6.35 / φ15.88	φ6.35 / φ15.88	φ9.52 / φ15.88	φ9.52 / φ15.88	φ9.52 / φ15.88	φ9.52 / φ15.88	
Refrigerant line (one way) length	m	30	30	50	50	50	50	
Vertical height differences	Outdoor is Higher/Lower	m	Max.10 / Max.10	Max.10 / Max.10	Max.30 / Max.15	Max.30 / Max.15	Max.30 / Max.15	
Outdoor operating temperature range	°C	21-43	21-43	21-43	21-43	21-43	21-43	