

DUCT CONNECTED -Low/Middle Static pressure-

FDUM



FDUM 40/50/60/71/100/125/140



*Not all functions are available with all remote control options.

Remote control (option)

Wired



RC-EX3A

RC-E5

RCH-E3

Wireless



RCN-KIT4-E2

Filter kit (option)



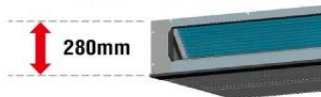
UM-FL1EF : for 40, 50
UM-FL2EF : for 60, 71
UM-FL3EF : for 100, 125, 140
external static pressure loss:5Pa

Point 1 Thin design

The height of all FDUM models is only 280mm.

FDUM100/125/140VF

70mm less



H 350mm → H 280mm

FDUM40/50/60/71VF

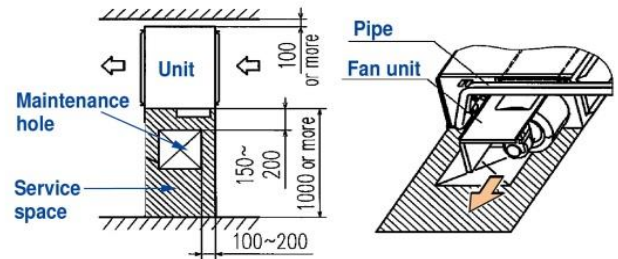
19mm less



H 299mm → H 280mm

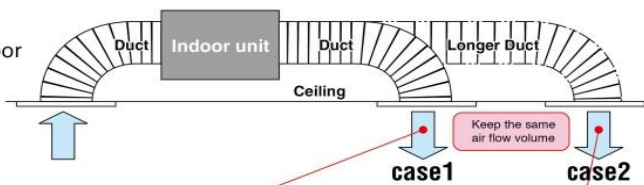
Point 2 Improvement of the serviceability

Fan unit (impeller and motor) can be pulled out from the right side of the unit. Maintenance can be available from the right side or the bottom side.



Point 3 Automatic external static pressure (E.S.P.) control

You can set External Static Pressure (E.S.P.) by method of manual setting on remote control. Indoor unit will control fan-speed to keep rated air flow volume at each fan speed setting. You can set required E.S.P. by wired remote control that calculated with the set air flow rate and pressure loss of the duct connected.



RC-E5 E.S.P. button

External Static Pressure (E.S.P.) can be set by E.S.P. button.



Setting No.	No.8	No.9	No.10	No.11	No.12	No.13	No.14	No.15
E.S.P.	80Pa	90Pa	100Pa	110Pa	120Pa	130Pa	140Pa	150Pa

*Range of 80~150 Pa is set at ex-factory default.
Range of 10~200 Pa is available by setting SW8-4 switch on at site.

Expansion of external static pressure range

Previous 10~130Pa

Current 10~200Pa

Point 4

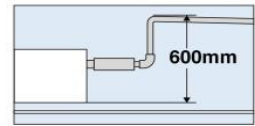
Transparent inspection window

Dirt condition of the bottom of a drain pan can be checked through this transparent inspection window without removing drain pan. (Please refer to P39)

Point 5

Enhanced installation workability

600mm Drain Pump is mounted in all models. The indoor unit is completely hidden in the ceiling, so this is suitable for spaces with classy interior decoration.

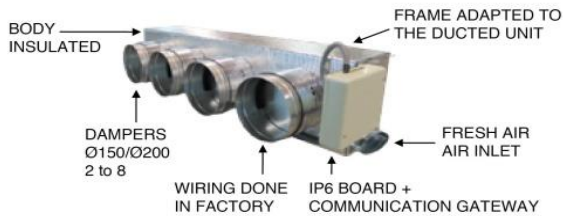


Round duct adapter

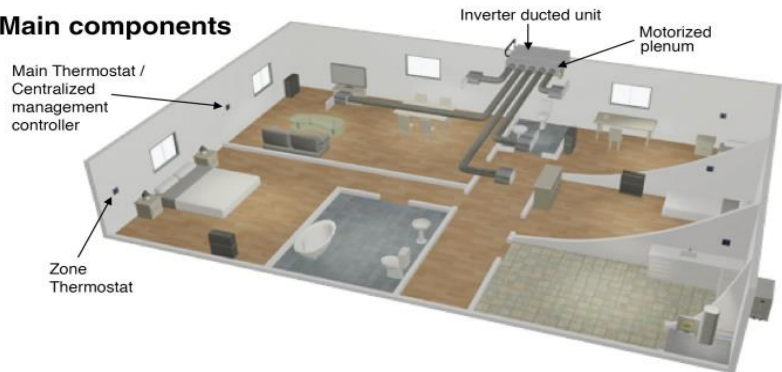


Company: AIRZONE
URL: <http://www.airzone.es>

All-in-one solution: the whole zoning system in a plug&play device perfectly adapted to the indoor DX unit



Main components



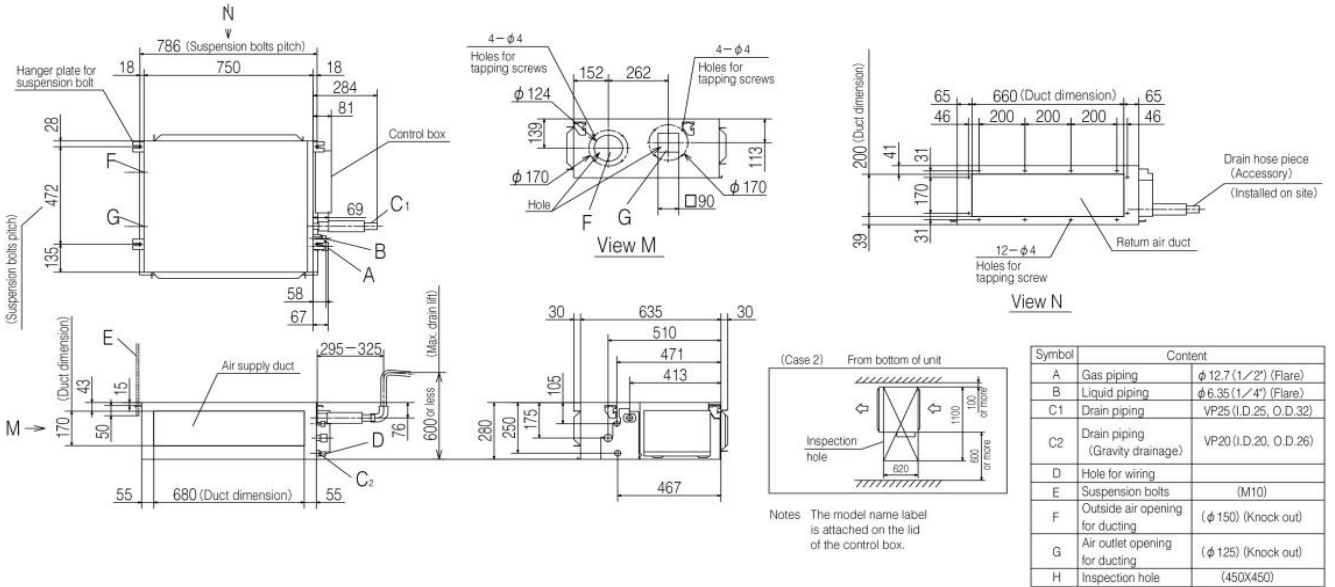
OUTDOOR UNIT

SRC • FDC	Hyper Inverter			Micro Inverter		
	40~60ZSX	71VNX	100~140VN(S)X	100~140VN(S)A	200VSA	250VSA
model						
Chargeless	15m	30m		30m		
Height x Width x Depth (mm)	640 x 800(+71) x 290	750 x 880(+88) x 340	1,300 x 970 x 370	845 x 970 x 370	1,300 x 970 x 370	1,505 x 970 x 370

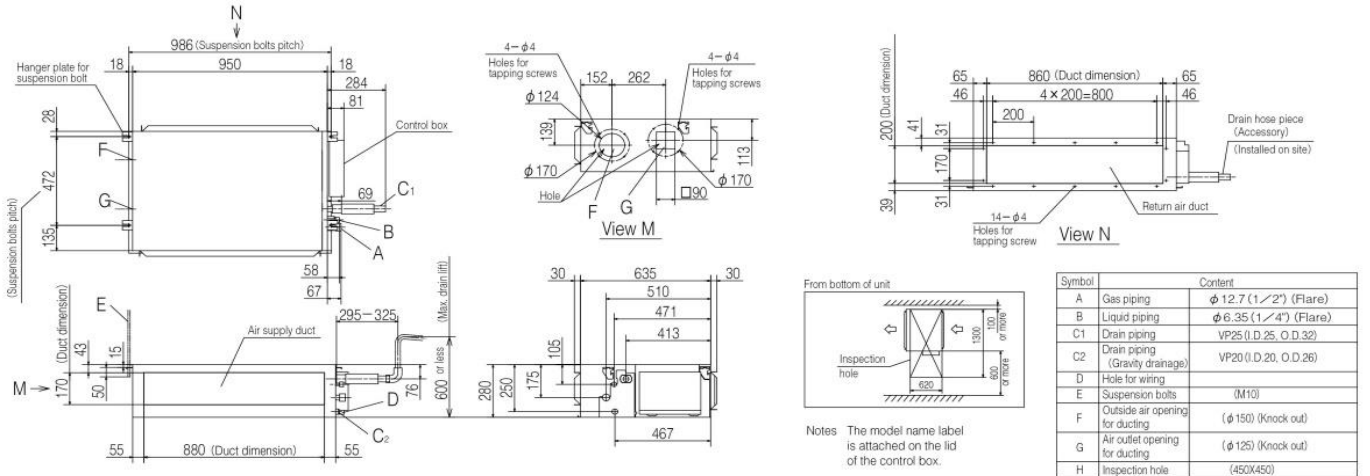
FDC	Standard Inverter		
	71VNP	90VNP1	100VNP
model			
Chargeless	15m		
Height x Width x Depth (mm)	640 x 800(+71) x 290	750 x 880(+88) x 340	845 x 970 x 370

DIMENSIONS (Unit:mm)

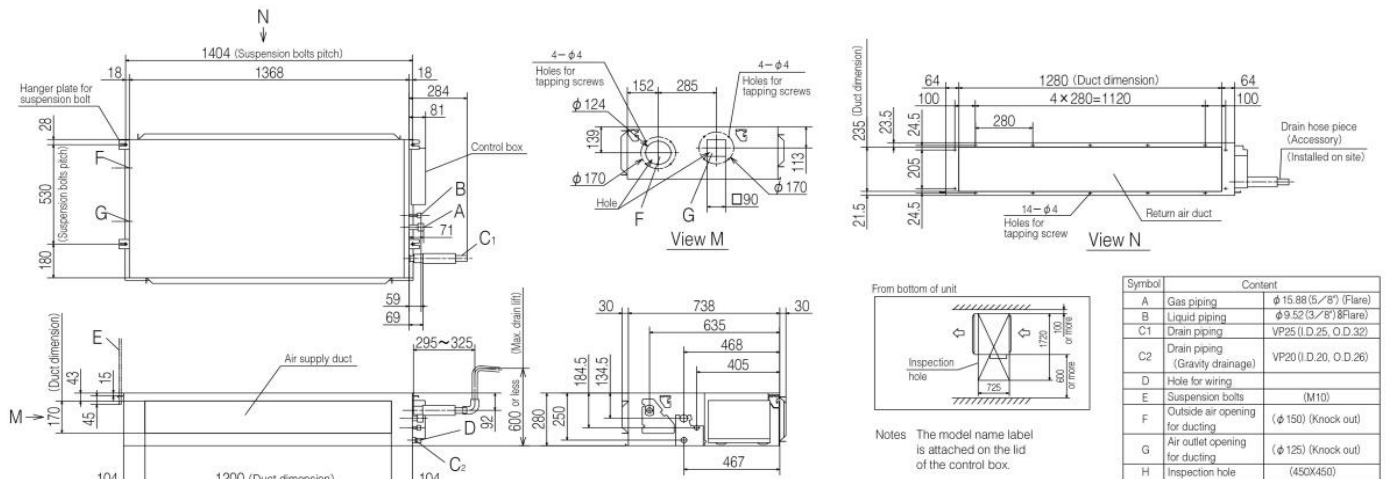
Models FDUM40VF, FDUM50VF



Models FDUM60VF,71VF1



Models FDUM100VF2,125VF,140VF



SPECIFICATIONS

		<i>Hyper Inverter</i>										
Set model name		FDUM40ZSXVF	FDUM50ZSXVF	FDUM60ZSXVF	FDUM71VNXVF1	FDUM100VNXVF2						
Indoor unit		FDUM40VF	FDUM50VF	FDUM60VF	FDUM71VF1	FDUM100VF2						
Outdoor unit		SRC40ZSX-S	SRC50ZSX-S	SRC60ZSX-S	FDC71VNX	FDC100VNX						
Power source		1 Phase 220-240V, 50Hz / 220V, 60Hz										
Nominal cooling capacity (Min~Max)		kW		4.0 (1.1 ~ 4.7)	5.0 (1.1 ~ 5.6)	5.6 (1.1 ~ 6.3)	7.1 (3.2 ~ 8.0)	10.0 (4.0 ~ 11.2)				
Nominal heating capacity (Min~Max)		kW		4.5 (0.6 ~ 5.4)	5.4 (0.6 ~ 6.3)	6.7 (0.6 ~ 7.1)	8.0 (3.6 ~ 9.0)	11.2 (4.0 ~ 12.5)				
Power consumption		Cooling/Heating		kW		0.952 / 1.07	1.38 / 1.45	1.54 / 1.75	2.03 / 1.99	2.68 / 3.02		
EER/COP		Cooling/Heating				4.20 / 4.21	3.62 / 3.72	3.64 / 3.83	3.50 / 4.02	3.73 / 3.71		
Inrush current		A		5		5	5	5	5			
Max. current		12		15		15	17	24				
Sound power level*1		Indoor		Cooling/Heating		60 / 60		60 / 60	65 / 65	65 / 65		
		Outdoor		Cooling/Heating		63 / 63		63 / 63	65 / 64	66 / 66		
Sound pressure level*1		Indoor		Cooling (P-Hi/Hi/Me/Lo)		dB(A)		37 / 32 / 29 / 26	37 / 32 / 29 / 26	36 / 31 / 28 / 25	38 / 33 / 29 / 25	44 / 38 / 36 / 30
				Heating (P-Hi/Hi/Me/Lo)				37 / 32 / 29 / 26	37 / 32 / 29 / 26	36 / 31 / 28 / 25	38 / 33 / 29 / 25	44 / 38 / 36 / 30
		Outdoor		Cooling/Heating		50 / 49		50 / 49	52 / 52	51 / 48	48 / 50	
Air flow		Indoor		Cooling (P-Hi/Hi/Me/Lo)		m ³ /min		13 / 10 / 9 / 8	13 / 10 / 9 / 8	20 / 15 / 13 / 10	24 / 19 / 15 / 10	36 / 28 / 25 / 19
				Heating (P-Hi/Hi/Me/Lo)				13 / 10 / 9 / 8	13 / 10 / 9 / 8	20 / 15 / 13 / 10	24 / 19 / 15 / 10	36 / 28 / 25 / 19
		Outdoor		Cooling/Heating		36 / 33		40 / 33	41.5 / 39	60 / 50	100 / 100	
External static pressure*3		Pa		Standard:35		Max:100		Standard:60		Max:100		
Exterior dimensions		Indoor		HeightxWidthxDepth		mm		280 x 750 x 635		280 x 950 x 635		
		Outdoor						640 x 800(+71) x 290		750 x 880(+88) x 340		
Net weight		Indoor		kg		29		45		34		
		Outdoor						60		54		
Ref.piping size		Liquid/Gas		ømm		6.35(1/4") / 12.7(1/2")		9.52(3/8") / 15.88(5/8")				
Refrigerant line (one way) length		m		Max.30		Max.50		Max.100				
Vertical height differences		Outdoor is higher/lower		m		Max.20 / Max.20		Max.30 / Max.15				
Outdoor operating temperature range		Cooling		°C		-15~46*4		-15~43*4				
		Heating				-20~24		-20~20				
Air filter						Filter kit : UM-FL1EF / UM-FL2EF / UM-FL3EF (option)						
Remote control (option)						wired:RC-EX3A, RC-E5, RCH-E3		wireless:RCN-KIT4-E2				

		<i>Hyper Inverter</i>										
Set model name		FDUM125VNXVF	FDUM140VNXVF	FDUM100VNXVF2	FDUM125VSXVF	FDUM140VSXVF						
Indoor unit		FDUM125VF	FDUM140VF	FDUM100VF2	FDUM125VF	FDUM140VF						
Outdoor unit		FDC125VNX	FDC140VNX	FDC100VSX	FDC125VSX	FDC140VSX						
Power source		1 Phase 220-240V, 50Hz / 220V, 60Hz			3 Phase 380-415V, 50Hz / 380V, 60Hz							
Nominal cooling capacity (Min~Max)		kW		12.5 (5.0 ~ 14.0)	14.0 (5.0 ~ 16.0)	10.0 (4.0 ~ 11.2)	12.5 (5.0 ~ 14.0)	14.0 (5.0 ~ 16.0)				
Nominal heating capacity (Min~Max)		kW		14.0 (4.0 ~ 17.0)	16.0 (4.0 ~ 18.0)	11.2 (4.0 ~ 16.0)	14.0 (4.0 ~ 18.0)	16.0 (4.0 ~ 20.0)				
Power consumption		Cooling/Heating		kW		3.49 / 3.77	4.28 / 4.42	2.68 / 3.02	3.49 / 3.77	4.28 / 4.42		
EER/COP		Cooling/Heating		3.58 / 3.71		3.27 / 3.62	3.73 / 3.71	3.58 / 3.71	3.27 / 3.62			
Inrush current		A		5		5	5	5				
Max. current		26		26		15	15	15				
Sound power level*1		Indoor		Cooling/Heating		67 / 67		70 / 70	65 / 65	67 / 67	70 / 70	
		Outdoor		Cooling/Heating		70 / 70		72 / 72	70 / 70	70 / 70	72 / 72	
Sound pressure level*1		Indoor		Cooling (P-Hi/Hi/Me/Lo)		dB(A)		45 / 40 / 34 / 29	47 / 40 / 35 / 30	44 / 38 / 36 / 30	45 / 40 / 34 / 29	47 / 40 / 35 / 30
				Heating (P-Hi/Hi/Me/Lo)				45 / 40 / 34 / 29	47 / 40 / 35 / 30	44 / 38 / 36 / 30	45 / 40 / 34 / 29	47 / 40 / 35 / 30
		Outdoor		Cooling/Heating		48 / 50		49 / 52	48 / 50	48 / 50	49 / 52	
Air flow		Indoor		Cooling (P-Hi/Hi/Me/Lo)		m ³ /min		39 / 32 / 26 / 20	48 / 35 / 28 / 22	36 / 28 / 25 / 19	39 / 32 / 26 / 20	48 / 35 / 28 / 22
				Heating (P-Hi/Hi/Me/Lo)				39 / 32 / 26 / 20	48 / 35 / 28 / 22	36 / 28 / 25 / 19	39 / 32 / 26 / 20	48 / 35 / 28 / 22
		Outdoor		Cooling/Heating		100 / 100		100 / 100	100 / 100	100 / 100	100 / 100	
External static pressure*3		Pa		Standard:60		Max:100		Standard:60		Max:100		
Exterior dimensions		Indoor		HeightxWidthxDepth		mm		280 x 1,370 x 740				
		Outdoor						1,300 x 970 x 370				
Net weight		Indoor		kg		54		105				
		Outdoor										
Ref.piping size		Liquid/Gas		ømm		9.52(3/8") / 15.88(5/8")						
Refrigerant line (one way) length		m		Max.100								
Vertical height differences		Outdoor is higher/lower		m		Max.30 / Max.15						
Outdoor operating temperature range		Cooling		°C		-15~43*4						
		Heating				-20~20						
Air filter						Filter kit : UM-FL3EF (option)						
Remote control (option)						wired:RC-EX3A, RC-E5, RCH-E3		wireless:RCN-KIT4-E2				

NOTES:

- The data are measured under the following conditions(ISO-T1).
Cooling:Indoor temp. of 27°CDB, 19°CWB, and outdoor temp. of 35°CDB. Heating:Indoor temp. of 20°CDB, and outdoor temp. of 7°CDB, 6°CWB.
*1 : Indicates the value in an anechoic chamber. During operation these values are somewhat higher due to ambient conditions.
*2 : The values are for one indoor unit operation. (Multi system only)
*3 : External static pressure is changeable to be set by the remote control. MAX external static pressure is "High static pressure" setting. The values of sound pressure level become 5dB(A) higher at external static pressure of 100Pa.
*4 : If a cooling operation is conducted when the outdoor air temperature is -5°C or lower, the outdoor unit should be installed at a place where it is not influenced by natural wind. If wind blows, the low pressure will drop and compressor frequency will increase, this will cause the capacity to drop and may cause the unit to break down.

SPECIFICATIONS

The values are for simultaneous Multi operation.

Set model name		Hyper Inverter					
		FDUM71VNXPVF	FDUM100VNXPVF	FDUM125VNXPVF	FDUM140VNXPVF1	FDUM140VNXTVF	
		Twin			Triple		
Indoor unit		FDUM40VF x 2	FDUM50VF x 2	FDUM60VF x 2	FDUM71VF1 x 2	FDUM50VF x 3	
Outdoor unit		FDC71VNX	FDC100VNX	FDC125VNX	FDC140VNX	FDC140VNX	
Power source		1 Phase 220-240V, 50Hz / 220V, 60Hz					
Nominal cooling capacity (Min~Max)		kW 7.1 (3.2 ~ 8.0)	10.0 (4.0 ~ 11.2)	12.5 (5.0 ~ 14.0)	14.0 (5.0 ~ 16.0)	14.0 (5.0 ~ 16.0)	
Nominal heating capacity (Min~Max)		kW 8.0 (3.6 ~ 9.0)	11.2 (4.0 ~ 12.5)	14.0 (4.0 ~ 17.0)	16.0 (4.0 ~ 18.0)	16.0 (4.0 ~ 18.0)	
Power consumption		Cooling/Heating kW 2.01 / 1.91	2.66 / 3.02	3.26 / 3.66	4.36 / 4.35	4.21 / 4.69	
EER/COP		Cooling/Heating 3.53 / 4.19	3.76 / 3.71	3.83 / 3.83	3.21 / 3.68	3.33 / 3.41	
Inrush current		A	5	5	5	5	
Max. current			17	24	26	26	
Sound power level*1	Indoor*2	dB(A)	Cooling/Heating 60 / 60	60 / 60	60 / 60	65 / 65	
	Outdoor		Cooling/Heating 66 / 66	70 / 70	70 / 70	72 / 72	
Sound pressure level*1	Indoor*2		Cooling (P-Hi/Hi/Me/Lo) 37 / 32 / 29 / 26	37 / 32 / 29 / 26	36 / 31 / 28 / 25	38 / 33 / 29 / 25	37 / 32 / 29 / 26
	Outdoor		Heating (P-Hi/Hi/Me/Lo) 37 / 32 / 29 / 26	37 / 32 / 29 / 26	36 / 31 / 28 / 25	38 / 33 / 29 / 25	37 / 32 / 29 / 26
Air flow	Indoor*2		Cooling/Heating 51 / 48	48 / 50	48 / 50	49 / 52	49 / 52
	Outdoor		Cooling (P-Hi/Hi/Me/Lo) 13 / 10 / 9 / 8	13 / 10 / 9 / 8	20 / 15 / 13 / 10	24 / 19 / 15 / 10	13 / 10 / 9 / 8
External static pressure*3		Pa	13 / 10 / 9 / 8	13 / 10 / 9 / 8	20 / 15 / 13 / 10	24 / 19 / 15 / 10	
Exterior dimensions		mm	60 / 50	100 / 100	100 / 100	100 / 100	
Net weight		kg	Standard:35 Max:100				
Ref.piping size		ømm	280 x 750 x 635		280 x 950 x 635		
Refrigerant line (one way) length		m	750 x 880(+88) x 340		1,300 x 970 x 370		
Vertical height differences		m	29		34		
Outdoor operating temperature range		°C	60		105		
Air filter			9.52(3/8") / 15.88(5/8")				
Remote control (option)			Max.50		Max.100		
			Max.30 / Max.15				
			-15~43*4				
			-20~20				
			Filter kit : UM-FL1EF / UM-FL2EF (option)				
			wired:RC-EX3A, RC-E5, RCH-E3 wireless:RCN-KIT4-E2				

The values are for simultaneous Multi operation.

Set model name		Hyper Inverter				
		FDUM100VXSXPVF	FDUM125VXSXPVF	FDUM140VXSXPVF1	FDUM140VXSXTVF	
		Twin		Triple		
Indoor unit		FDUM50VF x 2	FDUM60VF x 2	FDUM71VF1 x 2	FDUM50VF x 3	
Outdoor unit		FDC100VSX	FDC125VSX	FDC140VSX	FDC140VSX	
Power source		3 Phase 380-415V, 50Hz / 380V, 60Hz				
Nominal cooling capacity (Min~Max)		kW 10.0 (4.0 ~ 11.2)	12.5 (5.0 ~ 14.0)	14.0 (5.0 ~ 16.0)	14.0 (5.0 ~ 16.0)	
Nominal heating capacity (Min~Max)		kW 11.2 (4.0 ~ 16.0)	14.0 (4.0 ~ 18.0)	16.0 (4.0 ~ 20.0)	16.0 (4.0 ~ 20.0)	
Power consumption		Cooling/Heating kW 2.66 / 3.02	3.26 / 3.66	4.36 / 4.35	4.21 / 4.69	
EER/COP		Cooling/Heating 3.76 / 3.71	3.83 / 3.83	3.21 / 3.68	3.33 / 3.41	
Inrush current		A	5	5	5	
Max. current			15	15	15	
Sound power level*1	Indoor*2	dB(A)	Cooling/Heating 60 / 60	60 / 60	65 / 65	
	Outdoor		Cooling/Heating 70 / 70	70 / 70	72 / 72	
Sound pressure level*1	Indoor*2		Cooling (P-Hi/Hi/Me/Lo) 37 / 32 / 29 / 26	36 / 31 / 28 / 25	38 / 33 / 29 / 25	37 / 32 / 29 / 26
	Outdoor		Heating (P-Hi/Hi/Me/Lo) 37 / 32 / 29 / 26	36 / 31 / 28 / 25	38 / 33 / 29 / 25	37 / 32 / 29 / 26
Air flow	Indoor*2		Cooling/Heating 48 / 50	48 / 50	49 / 52	49 / 52
	Outdoor		Cooling (P-Hi/Hi/Me/Lo) 13 / 10 / 9 / 8	20 / 15 / 13 / 10	24 / 19 / 15 / 10	13 / 10 / 9 / 8
External static pressure*3		Pa	13 / 10 / 9 / 8	20 / 15 / 13 / 10	24 / 19 / 15 / 10	
Exterior dimensions		mm	100 / 100	100 / 100	100 / 100	
Net weight		kg	Standard:35 Max:100			
Ref.piping size		ømm	280 x 750 x 635		280 x 950 x 635	
Refrigerant line (one way) length		m	29		34	
Vertical height differences		m	105		29	
Outdoor operating temperature range		°C	9.52(3/8") / 15.88(5/8")			
			Max.100			
			Max.30 / Max.15			
			-15~43*4			
			-20~20			
			Filter kit : UM-FL1EF / UM-FL2EF (option)			
			wired:RC-EX3A, RC-E5, RCH-E3 wireless:RCN-KIT4-E2			

SPECIFICATIONS

		Micro Inverter					
Set model name		FDUM100VNAVF2	FDUM125VNAVF	FDUM140VNAVF	FDUM100VSAVF2	FDUM125VSAVF	FDUM140VSAVF
Indoor unit		FDUM100VF2	FDUM125VF	FDUM140VF	FDUM100VF2	FDUM125VF	FDUM140VF
Outdoor unit		FDC100VNA	FDC125VNA	FDC140VNA	FDC100VSA	FDC125VSA	FDC140VSA
Power source		1 Phase 220-240V, 50Hz / 220V, 60Hz			3 Phase 380-415V, 50Hz / 380V, 60Hz		
Nominal cooling capacity (Min~Max)		kW 10.0 (4.0 ~ 11.2)	12.5 (5.0 ~ 14.0)	13.6 (5.0 ~ 14.5)	10.0 (4.0 ~ 11.2)	12.5 (5.0 ~ 14.0)	13.6 (5.0 ~ 14.5)
Nominal heating capacity (Min~Max)		kW 11.2 (4.0 ~ 12.5)	14.0 (4.0 ~ 16.0)	15.5 (4.0 ~ 16.5)	11.2 (4.0 ~ 12.5)	14.0 (4.0 ~ 16.0)	15.5 (4.0 ~ 16.5)
Power consumption		Cooling/Heating kW 2.84 / 2.78	4.36 / 3.69	4.93 / 4.21	2.84 / 2.78	4.36 / 3.69	4.93 / 4.21
EER/COP		Cooling/Heating 3.52 / 4.03	2.87 / 3.79	2.76 / 3.68	3.52 / 4.03	2.87 / 3.79	2.76 / 3.68
Inrush current		A					
Max. current		5	5	5	5	5	5
Sound power level*1		26	26	27	17	17	18
Sound pressure level*1	Indoor	Cooling/Heating 65 / 65	67 / 67	70 / 70	65 / 65	67 / 67	70 / 70
	Outdoor	Cooling/Heating 70 / 70	71 / 71	73 / 73	70 / 70	71 / 71	73 / 73
Sound pressure level*1	Indoor	Cooling (P-Hi/Hi/Me/Lo) dB(A) 44 / 38 / 36 / 30	45 / 40 / 34 / 29	47 / 40 / 35 / 30	44 / 38 / 36 / 30	45 / 40 / 34 / 29	47 / 40 / 35 / 30
		Heating (P-Hi/Hi/Me/Lo) 44 / 38 / 36 / 30	45 / 40 / 34 / 29	47 / 40 / 35 / 30	44 / 38 / 36 / 30	45 / 40 / 34 / 29	47 / 40 / 35 / 30
Air flow	Indoor	Cooling/Heating m³/min 54 / 56	55 / 57	57 / 59	54 / 56	55 / 57	57 / 59
		Cooling (P-Hi/Hi/Me/Lo) 36 / 28 / 25 / 19	39 / 32 / 26 / 20	48 / 35 / 28 / 22	36 / 28 / 25 / 19	39 / 32 / 26 / 20	48 / 35 / 28 / 22
Air flow	Outdoor	Heating (P-Hi/Hi/Me/Lo) 36 / 28 / 25 / 19	39 / 32 / 26 / 20	48 / 35 / 28 / 22	36 / 28 / 25 / 19	39 / 32 / 26 / 20	48 / 35 / 28 / 22
		Cooling/Heating 75 / 73	75 / 73	75 / 73	75 / 73	75 / 73	75 / 73
External static pressure*3		Pa Standard:60 Max:100					
Exterior dimensions	Indoor	mm 280 x 1,370 x 740					
	Outdoor	HeightxWidthxDepth 845 x 970 x 370					
Net weight	Indoor	kg 54					
	Outdoor	80 82					
Ref.piping size		Liquid/Gas ømm 9.52(3/8") / 15.88(5/8")					
Refrigerant line (one way) length		m Max.50					
Vertical height differences		Outdoor is higher/lower m Max.50 / Max.15					
Outdoor operating temperature range	Cooling	°C -15~50*4					
	Heating	-20~20					
Air filter		Filter kit : UM-FL3EF (option)					
Remote control (option)		wired:RC-EX3A, RC-E5, RCH-E3 wireless:RCN-KIT4-E2					

The values are for simultaneous Multi operation.

		Micro Inverter				
Set model name		FDUM100VNAPVF	FDUM125VNAPVF	FDUM140VNAPVF1	FDUM140VNATVF	FDUM100VSAPVF
Indoor unit		FDUM50VF x 2	FDUM60VF x 2	FDUM71VF1 x 2	FDUM50VF x 3	FDUM50VF x 2
Outdoor unit		FDC100VNA	FDC125VNA	FDC140VNA	FDC140VNA	FDC100VSA
Power source		1 Phase 220-240V, 50Hz / 220V, 60Hz				3 Phase 380-415V, 50Hz / 380V, 60Hz
Nominal cooling capacity (Min~Max)		kW 10.0 (4.0 ~ 11.2)	12.5 (5.0 ~ 14.0)	13.6 (5.0 ~ 14.5)	13.6 (5.0 ~ 14.5)	10.0 (4.0 ~ 11.2)
Nominal heating capacity (Min~Max)		kW 11.2 (4.0 ~ 12.5)	14.0 (4.0 ~ 16.0)	15.5 (4.0 ~ 16.5)	15.5 (4.0 ~ 16.5)	11.2 (4.0 ~ 12.5)
Power consumption		Cooling/Heating kW 3.25 / 3.21	4.53 / 3.75	5.02 / 4.20	5.02 / 4.20	3.25 / 3.21
EER/COP		Cooling/Heating 3.08 / 3.49	2.76 / 3.73	2.71 / 3.69	2.71 / 3.69	3.08 / 3.49
Inrush current		A				
Max. current		5	5	5	5	5
Sound power level*1		26	26	27	27	17
Sound pressure level*1	Indoor*2	Cooling/Heating 60 / 60	60 / 60	65 / 65	60 / 60	60 / 60
	Outdoor	Cooling/Heating 70 / 70	71 / 71	73 / 73	73 / 73	70 / 70
Sound pressure level*1	Indoor*2	Cooling (P-Hi/Hi/Me/Lo) dB(A) 37 / 32 / 29 / 26	36 / 31 / 28 / 25	38 / 33 / 29 / 25	37 / 32 / 29 / 26	37 / 32 / 29 / 26
		Heating (P-Hi/Hi/Me/Lo) 37 / 32 / 29 / 26	36 / 31 / 28 / 25	38 / 33 / 29 / 25	37 / 32 / 29 / 26	37 / 32 / 29 / 26
Air flow	Indoor*2	Cooling/Heating m³/min 54 / 56	55 / 57	57 / 59	57 / 59	54 / 56
		Cooling (P-Hi/Hi/Me/Lo) 13 / 10 / 9 / 8	20 / 15 / 13 / 10	24 / 19 / 15 / 10	13 / 10 / 9 / 8	13 / 10 / 9 / 8
Air flow	Outdoor	Heating (P-Hi/Hi/Me/Lo) 13 / 10 / 9 / 8	20 / 15 / 13 / 10	24 / 19 / 15 / 10	13 / 10 / 9 / 8	13 / 10 / 9 / 8
		Cooling/Heating 75 / 73	75 / 73	75 / 73	75 / 73	75 / 73
External static pressure*3		Pa Standard:35 Max:100				
Exterior dimensions	Indoor	mm 280 x 750 x 635				
	Outdoor	280 x 950 x 635 845 x 970 x 370 280 x 750 x 635				
Net weight	Indoor	kg 29 34 29				
	Outdoor	80 82				
Ref.piping size		Liquid/Gas ømm 9.52(3/8") / 15.88(5/8")				
Refrigerant line (one way) length		m Max.50				
Vertical height differences		Outdoor is higher/lower m Max.50 / Max.15				
Outdoor operating temperature range	Cooling	°C -15~50*4				
	Heating	-20~20				
Air filter		Filter kit : UM-FL1EF / UM-FL2EF (option)				
Remote control (option)		wired:RC-EX3A, RC-E5, RCH-E3 wireless:RCN-KIT4-E2				

NOTES:

The data are measured under the following conditions(ISO-T1).
 Cooling:Indoor temp. of 27°CDB, 19°CWB, and outdoor temp. of 35°CDB. Heating:Indoor temp. of 20°CDB, and outdoor temp. of 7°CDB, 6°CWB.
 *1 : Indicates the value in an anechoic chamber. During operation these values are somewhat higher due to ambient conditions.
 *2 : The values are for one indoor unit operation. (Multi system only)
 *3 : External static pressure is changeable to be set by the remote control. MAX external static pressure is "High static pressure" setting. The values of sound pressure level become 5dB(A) higher at external static pressure of 100Pa.
 *4 : If a cooling operation is conducted when the outdoor air temperature is -5°C or lower, the outdoor unit should be installed at a place where it is not influenced by natural wind. If wind blows, the low pressure will drop and compressor frequency will increase, this will cause the capacity to drop and may cause the unit to break down.

SPECIFICATIONS

The values are for simultaneous Multi operation.

Set model name		Micro Inverter							
		FDUM125VSAPVF	FDUM140VSAPVF1	FDUM200VSAPVF2	FDUM250VSAPVF	FDUM140VSATVF	FDUM200VSATVF1		
Indoor unit		Twin			Triple				
Outdoor unit		FDC125VSA	FDC140VSA	FDC200VSA	FDC250VSA	FDC140VSA	FDC200VSA		
Power source		3 Phase 380-415V, 50Hz / 380V, 60Hz							
Nominal cooling capacity (Min~Max)		kW	12.5 (5.0 ~ 14.0)	13.6 (5.0 ~ 14.5)	19.0 (5.2 ~ 22.4)	24.0 (6.9 ~ 28.0)	13.6 (5.0 ~ 14.5)	19.0 (5.2 ~ 22.4)	
Nominal heating capacity (Min~Max)		kW	14.0 (4.0 ~ 16.0)	15.5 (4.0 ~ 16.5)	22.4 (3.3 ~ 25.0)	27.0 (5.5 ~ 31.5)	15.5 (4.0 ~ 16.5)	22.4 (3.3 ~ 25.0)	
Power consumption	Cooling/Heating	kW	4.53 / 3.75	5.02 / 4.20	6.51 / 6.04	8.33 / 7.52	5.02 / 4.20	6.46 / 6.15	
EER/COP	Cooling/Heating		2.76 / 3.73	2.71 / 3.69	2.92 / 3.71	2.88 / 3.59	2.71 / 3.69	2.94 / 3.64	
Inrush current		A	5	5	5	5	5	5	
Max. current			17	18	22	24	18	22	
Sound power level*1	Indoor*2	Cooling/Heating	60 / 60	65 / 65	65 / 65	67 / 67	60 / 60	65 / 65	
	Outdoor	Cooling/Heating	71 / 71	73 / 73	72 / 74	73 / 75	73 / 73	72 / 74	
Sound pressure level*1	Indoor*2	Cooling (P-Hi/Hi/Me/Lo)	36 / 31 / 28 / 25	38 / 33 / 29 / 25	44 / 38 / 36 / 30	45 / 40 / 34 / 29	37 / 32 / 29 / 26	38 / 33 / 29 / 25	
	Outdoor	Cooling/Heating	36 / 31 / 28 / 25	38 / 33 / 29 / 25	44 / 38 / 36 / 30	45 / 40 / 34 / 29	37 / 32 / 29 / 26	38 / 33 / 29 / 25	
Air flow	Indoor*2	Cooling (P-Hi/Hi/Me/Lo)	20 / 15 / 13 / 10	24 / 19 / 15 / 10	36 / 28 / 25 / 19	39 / 32 / 26 / 20	13 / 10 / 9 / 8	24 / 19 / 15 / 10	
	Outdoor	Cooling/Heating	20 / 15 / 13 / 10	24 / 19 / 15 / 10	36 / 28 / 25 / 19	39 / 32 / 26 / 20	13 / 10 / 9 / 8	24 / 19 / 15 / 10	
External static pressure*3		Pa	Standard:35 Max:100		Standard:60 Max:100		Standard:35 Max:100	Standard:35 Max:100	
Exterior dimensions	Indoor	HeightxWidthxDepth	280 x 950 x 635		280 x 1,370 x 740		280 x 750 x 635	280 x 950 x 635	
	Outdoor		845 x 970 x 370		1,300 x 970 x 370		845 x 970 x 370	1,300 x 970 x 370	
Net weight	Indoor		34		54		29	34	
	Outdoor		82		115		82	115	
Ref.piping size	Liquid/Gas	ømm	9.52(3/8") / 15.88(5/8")		9.52(3/8") / 22.22(7/8")		12.7(1/2") / 22.22(7/8")	9.52(3/8") / 15.88(5/8")	9.52(3/8") / 22.22(7/8")
Refrigerant line (one way) length		m	Max.50		Max.70		Max.50	Max.70	
Vertical height differences		Outdoor is higher/lower	Max.50 / Max.15		Max.30 / Max.15		Max.50 / Max.15	Max.30 / Max.15	
Outdoor operating temperature range		Cooling			-15~50*4				
		Heating	-20~20		-15~20		-20~20	-15~20	
Air filter			Filter kit : UM-FL1EF / UM-FL2EF / UM-FL3EF (option)						
Remote control (option)			wired:RC-EX3A, RC-E5, RCH-E3 wireless:RCN-KIT4-E2						

Set model name		Standard Inverter				
		FDUM71VNPVF1	FDUM90VNP1VF2	FDUM100VNP1VF2		
Indoor unit		FDUM71VF1	FDUM100VF2	FDUM100VF2		
Outdoor unit		FDC71VNP	FDC90VNP1	FDC100VNP		
Power source		1 Phase 220-240V, 50Hz / 220V, 60Hz				
Nominal cooling capacity (Min~Max)		kW	7.1 (1.4 ~ 7.1)	9.0 (1.9 ~ 9.0)	10.0 (2.8 ~ 11.2)	
Nominal heating capacity (Min~Max)		kW	7.1 (1.0 ~ 7.1)	9.0 (1.5 ~ 9.0)	11.2 (2.5 ~ 12.5)	
Power consumption	Cooling/Heating	kW	2.60 / 1.89	2.69 / 2.25	3.00 / 2.93	
EER/COP	Cooling/Heating		2.73 / 3.76	3.35 / 4.00	3.33 / 3.82	
Inrush current		A	5	5	5	
Max. current			14.5	18.0	22.0	
Sound power level*1	Indoor	Cooling/Heating	65 / 65	65 / 65	65 / 65	
	Outdoor	Cooling/Heating	67 / 67	69 / 69	70 / 70	
Sound pressure level*1	Indoor	Cooling (P-Hi/Hi/Me/Lo)	38 / 33 / 29 / 25	44 / 38 / 36 / 30	44 / 38 / 36 / 30	
	Outdoor	Cooling/Heating	38 / 33 / 29 / 25	44 / 38 / 36 / 30	44 / 38 / 36 / 30	
Air flow	Indoor	Cooling (P-Hi/Hi/Me/Lo)	24 / 19 / 15 / 10	36 / 28 / 25 / 19	36 / 28 / 25 / 19	
	Outdoor	Cooling/Heating	24 / 19 / 15 / 10	36 / 28 / 25 / 19	36 / 28 / 25 / 19	
External static pressure*3		Pa	Standard:35 Max:100		Standard:60 Max:100	
Exterior dimensions	Indoor	HeightxWidthxDepth	280 x 950 x 635		280 x 1,370 x 740	
	Outdoor		640 x 800(+71) x 290		750 x 880(+88) x 340	845 x 970 x 370
Net weight	Indoor		34		54	
	Outdoor		45		70	
Ref.piping size	Liquid/Gas	ømm	6.35(1/4") / 12.7(1/2")		6.35(1/4") / 15.88(5/8")	9.52(3/8") / 15.88(5/8")
Refrigerant line (one way) length		m	Max.30			
Vertical height differences		Outdoor is higher/lower	Max.20 / Max.20			
Outdoor operating temperature range		Cooling	-15~46*4			
		Heating	-15~20			
Air filter			Filter kit : UM-FL2EF / UM-FL3EF (option)			
Remote control (option)			wired:RC-EX3A, RC-E5, RCH-E3 wireless:RCN-KIT4-E2			